

For Research Use Only

# LYRM5 Polyclonal antibody, PBS Only

Catalog Number: 31548-1-PBS



## Basic Information

<b>Catalog Number:</b> 31548-1-PBS	<b>GenBank Accession Number:</b> BC071769	<b>Purification Method:</b> Antigen affinity Purification
<b>Size:</b> 100ug , Concentration: 1 mg/ml by Nanodrop;	<b>GeneID (NCBI):</b> 144363	
<b>Source:</b> Rabbit	<b>UNIPROT ID:</b> Q6IPR1	
<b>Isotype:</b> IgG	<b>Full Name:</b> LYR motif containing 5	
<b>Immunogen Catalog Number:</b> AG35889	<b>Observed MW:</b> 11 kDa	

## Applications

**Tested Applications:**  
IP, Indirect ELISA

**Species Specificity:**  
human, mouse

## Background Information

LYRM5, also known as ETFRF1, belongs to the Complex1\_LYR-like Superfamily. LYRM5 is a mitochondrial protein and plays key roles in acetate metabolism, and in essential Fe-S cluster biogenesis. In vitro, LYRM5 was found to inhibit ETF by promoting the removal of flavin from the ETF holoenzyme, thus potentially regulating the rate of  $\beta$ -oxidation (PMID: 35402183, PMID: 36266680). The calculated molecular weight of LYRM5 is 11 kDa.

## Storage

**Storage:**  
Store at -80°C.

**Storage Buffer:**  
PBS only, pH7.3

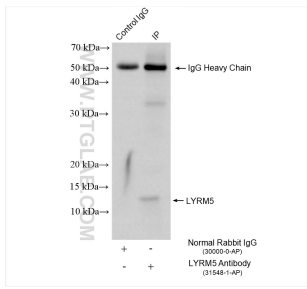
For technical support and original validation data for this product please contact:

T: 1 (888) 4PTGLAB (1-888-478-4522) (toll free  
in USA), or 1(312) 455-8498 (outside USA)

E: [proteintech@ptglab.com](mailto:proteintech@ptglab.com)  
W: [ptglab.com](http://ptglab.com)

**This product is exclusively available under Proteintech Group brand and is not available to purchase from any other manufacturer.**

## Selected Validation Data



IP result of anti-LYRM5 (IP:31548-1-AP, 4ug; Detection:31548-1-AP 1:500) with mouse heart tissue lysate 1840 ug. This data was developed using the same antibody clone with 31548-1-PBS in a different storage buffer formulation.