

For Research Use Only

COMTD1 Polyclonal antibody

Catalog Number: 31565-1-AP



Basic Information

Catalog Number:

31565-1-AP

Size:

150ul, Concentration: 700 ug/ml by Nanodrop;

Source:

Rabbit

Isotype:

IgG

Immunogen Catalog Number:

AG35997

GenBank Accession Number:

BC023663

GeneID (NCBI):

118881

UNIPROT ID:

Q86VU5

Full Name:

catechol-O-methyltransferase domain containing 1

Observed MW:

30 kDa

Purification Method:

Antigen affinity Purification

Recommended Dilutions:

WB 1:1000-1:4000

Applications

Tested Applications:

WB, ELISA

Species Specificity:

Human, rat, mouse

Positive Controls:

WB : rat cerebellum tissue, NIH/3T3 cells, SK-BR-3 cells, rat pancreas tissue

Background Information

COMTD1 is associated with mitochondrial fractions of several cell types. COMTD1 is ubiquitously expressed in humans and mice but is expressed most highly in the gall bladder, small intestine, parathyroid gland, and renal tubes of the kidney (PMID: 37068079).

Storage

Storage:

Store at -20°C. Stable for one year after shipment.

Storage Buffer:

PBS with 0.02% sodium azide and 50% glycerol pH 7.3.

Aliquoting is unnecessary for -20°C storage

*** 20ul sizes contain 0.1% BSA

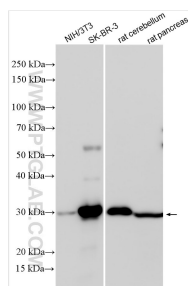
For technical support and original validation data for this product please contact:

T: 1 (888) 4PTGLAB (1-888-478-4522) (toll free in USA), or 1(312) 455-8498 (outside USA)

E: proteintech@ptglab.com
W: ptglab.com

This product is exclusively available under Proteintech Group brand and is not available to purchase from any other manufacturer.

Selected Validation Data



Various lysates were subjected to SDS PAGE followed by western blot with 31565-1-AP (COMTD1 antibody) at dilution of 1:2000 incubated at room temperature for 1.5 hours.