

For Research Use Only

# AIF1L Polyclonal antibody

Catalog Number: 31569-1-AP



## Basic Information

<b>Catalog Number:</b> 31569-1-AP	<b>GenBank Accession Number:</b> BC021253	<b>Purification Method:</b> Antigen affinity Purification
<b>Size:</b> 150ul , Concentration: 450 ug/ml by Nanodrop;	<b>GeneID (NCBI):</b> 83543	<b>Recommended Dilutions:</b> WB 1:1000-1:4000 IF-P 1:50-1:500
<b>Source:</b> Rabbit	<b>UNIPROT ID:</b> Q9BQ10	
<b>Isotype:</b> IgG	<b>Full Name:</b> allograft inflammatory factor 1-like	
<b>Immunogen Catalog Number:</b> AG36216	<b>Observed MW:</b> 17 kDa	

## Applications

<b>Tested Applications:</b> WB, IF-P, ELISA	<b>Positive Controls:</b>
<b>Species Specificity:</b> human, mouse, rat	<b>WB :</b> HEK-293 cells, MCF-7 cells, mouse kidney tissue, rat kidney tissue
	<b>IF-P :</b> mouse kidney tissue,

## Background Information

AIF1L is a homolog to the allograft inflammatory factor 1 (AIF1 or IBA1), sharing up to 60% sequence homology. Previous work could demonstrate that AIF1L and AIF1 show actin bundling and cross-linking function, co-localization, and sedimentation with F-actin. More recently, increased expression levels for AIF1L were reported in cases of breast cancer and functionally related to increased proliferation rates via upregulation of cyclin D1.

## Storage

**Storage:**  
Store at -20°C. Stable for one year after shipment.  
**Storage Buffer:**  
PBS with 0.02% sodium azide and 50% glycerol pH 7.3.  
Aliquoting is unnecessary for -20°C storage

\*\*\* 20ul sizes contain 0.1% BSA

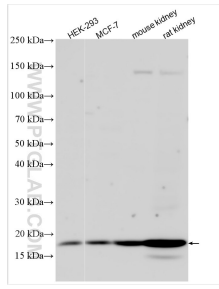
For technical support and original validation data for this product please contact:

T: 1 (888) 4PTGLAB (1-888-478-4522) (toll free in USA), or 1(312) 455-8498 (outside USA)

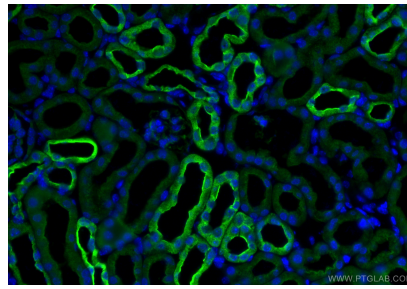
E: [proteintech@ptglab.com](mailto:proteintech@ptglab.com)  
W: [ptglab.com](http://ptglab.com)

This product is exclusively available under Proteintech Group brand and is not available to purchase from any other manufacturer.

## Selected Validation Data



Various lysates were subjected to SDS PAGE followed by western blot with 31569-1-AP (AIF1L antibody) at dilution of 1:2000 incubated at room temperature for 1.5 hours.



Immunofluorescent analysis of (4% PFA) fixed paraffin-embedded mouse kidney tissue using AIF1L antibody (31569-1-AP) at dilution of 1:200 and CoraLite®488-Conjugated Goat Anti-Rabbit IgG(H+L) (SA00013-2). Heat mediated antigen retrieval with Tris-EDTA buffer (pH 9.0).