

For Research Use Only

WHAMM Polyclonal antibody, PBS Only

Catalog Number: 31572-1-PBS



Basic Information

Catalog Number:

31572-1-PBS

Size:

100ug, Concentration: 1 mg/ml by Nanodrop;

Source:

Rabbit

Isotype:

IgG

Immunogen Catalog Number:

AG36160

GenBank Accession Number:

BC167774

GeneID (NCBI):

123720

UNIPROT ID:

Q8TF30

Full Name:

WAS protein homolog associated with actin, golgi membranes and microtubules

Observed MW:

90-100 kDa

Purification Method:

Antigen affinity Purification

Applications

Tested Applications:

WB, IF/ICC, Indirect ELISA

Species Specificity:

human

Background Information

WHAMM (WASP homolog associated with actin, golgi membranes and microtubules), also known as WHDC1. It is expected to be located in the cytoplasm, which is enriched in brain, lung, heart, colon and kidney. WHAMM is involved in Golgi membrane association, microtubule binding, and actin nucleation as a nucleation-promoting factor, which activates the actin-related protein 2/3 complex (the Arp2/3 complex) (PMID: 23160625). It is reported that the nucleation-promoting factor (NPF) WHAMM recruits and activates the Arp2/3 complex for actin assembly at sites of autophagosome formation on the ER (PMID: 26291929). The molecular weight of WHAMM is 90 kDa.

Storage

Storage:

Store at -80°C.

Storage Buffer:

PBS only, pH7.3

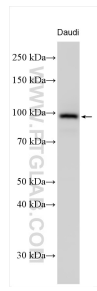
For technical support and original validation data for this product please contact:

T: 1 (888) 4PTGLAB (1-888-478-4522) (toll free in USA), or 1(312) 455-8498 (outside USA)

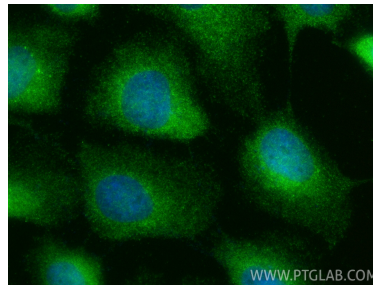
E: proteintech@ptglab.com
W: ptglab.com

This product is exclusively available under Proteintech Group brand and is not available to purchase from any other manufacturer.

Selected Validation Data



Various lysates were subjected to SDS PAGE followed by western blot with 31572-1-AP (WHAMM antibody) at dilution of 1:3000 incubated at room temperature for 1.5 hours. This data was developed using the same antibody clone with 31572-1-PBS in a different storage buffer formulation.



Immunofluorescent analysis of (-20°C Methanol) fixed A431 cells using WHAMM antibody (31572-1-AP) at dilution of 1:200 and CoraLite® 488-Conjugated Goat Anti-Rabbit IgG(H+L) (SA00013-2). This data was developed using the same antibody clone with 31572-1-PBS in a different storage buffer formulation.