

For Research Use Only

# CSMD2 Polyclonal antibody, PBS Only

Catalog Number: 31573-1-PBS



## Basic Information

**Catalog Number:**

31573-1-PBS

**Size:**

100ug, Concentration: 1 mg/ml by Nanodrop;

**Source:**

Rabbit

**Isotype:**

IgG

**Immunogen Catalog Number:**

AG36106

**GenBank Accession Number:**

NM\_001281956

**GeneID (NCBI):**

114784

**UNIPROT ID:**

Q7Z408

**Full Name:**

CUB and Sushi multiple domains 2

**Calculated MW:**

380kDa

**Observed MW:**

380 kDa

**Purification Method:**

Antigen affinity Purification

## Applications

**Tested Applications:**

WB, IHC, Indirect ELISA

**Species Specificity:**

human, mouse, rat

## Background Information

CUB and sushi multiple domains 2 (CSMD2), located on the short arm of human chromosome 1 (1p35.1), encodes a single-pass transmembrane protein with a large extracellular domain consisting of CUB and Sushi domain repeats. CSMD2 is highly expressed in the developing and mature brain and has been linked to schizophrenia (PMID:31068362). The full-length molecular weight of CSMD2 protein is 380 kDa.

## Storage

**Storage:**

Store at -80°C.

**Storage Buffer:**

PBS only, pH7.3

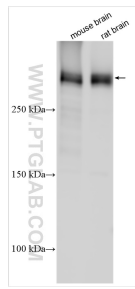
For technical support and original validation data for this product please contact:

T: 1 (888) 4PTGLAB (1-888-478-4522) (toll free in USA), or 1(312) 455-8498 (outside USA)

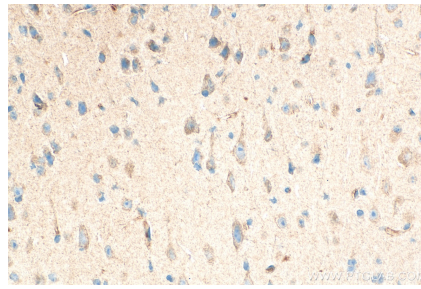
E: [proteintech@ptglab.com](mailto:proteintech@ptglab.com)  
W: [ptglab.com](http://ptglab.com)

**This product is exclusively available under Proteintech Group brand and is not available to purchase from any other manufacturer.**

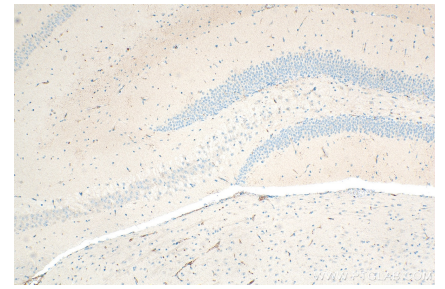
## Selected Validation Data



Various lysates were subjected to SDS PAGE followed by western blot with 31573-1-AP (CSMD2 antibody) at dilution of 1:800 incubated at room temperature for 1.5 hours. This data was developed using the same antibody clone with 31573-1-PBS in a different storage buffer formulation.



Immunohistochemical analysis of paraffin-embedded mouse brain tissue slide using 31573-1-AP (CSMD2 antibody) at dilution of 1:200 (under 40x lens). Heat mediated antigen retrieval with Tris-EDTA buffer (pH 9.0). This data was developed using the same antibody clone with 31573-1-PBS in a different storage buffer formulation.



Immunohistochemical analysis of paraffin-embedded mouse brain tissue slide using 31573-1-AP (CSMD2 antibody) at dilution of 1:200 (under 10x lens). Heat mediated antigen retrieval with Tris-EDTA buffer (pH 9.0). This data was developed using the same antibody clone with 31573-1-PBS in a different storage buffer formulation.