

For Research Use Only

# SCRT1 Polyclonal antibody, PBS Only

Catalog Number: 31577-1-PBS



## Basic Information

<b>Catalog Number:</b> 31577-1-PBS	<b>GenBank Accession Number:</b> BC168377	<b>Purification Method:</b> Antigen affinity Purification
<b>Size:</b> 100ug , Concentration: 1 mg/ml by Nanodrop;	<b>GeneID (NCBI):</b> 83482	
<b>Source:</b> Rabbit	<b>UNIPROT ID:</b> Q9BWW7	
<b>Isotype:</b> IgG	<b>Full Name:</b> scratch homolog 1, zinc finger protein (Drosophila)	
<b>Immunogen Catalog Number:</b> AG36215	<b>Observed MW:</b> 36 kDa	

## Applications

**Tested Applications:**  
WB, Indirect ELISA

**Species Specificity:**  
human, mouse

## Background Information

SCRT1 (Transcriptional repressor scratch 1), which is expressed in many tissues, especially in brain and adrenal gland. In addition, SCRT1 is also expressed in islet  $\beta$  cells, and its expression is related to insulin secretion ability. SCRT1 is a C2H2 zinc finger transcription inhibitor, which can bind to E-box motif. The encoded protein may promote nerve differentiation and may be related to cancer with neuroendocrine characteristics. The functions of SCRT1 in islet  $\beta$  cells include regulating the expression and secretion of insulin and influencing the proliferation of  $\beta$  cells. SCRT1 may control calcineurin /NFAT signaling pathway by affecting the expression of Syt4, Notch1, Nfatc1 and Nfatc2 genes, which is an important regulator of the growth and function of  $\beta$  cells (PMID: 33309639). The molecular weight of SCRT1 is 36 kDa.

## Storage

**Storage:**  
Store at  $-80^{\circ}\text{C}$ .

**Storage Buffer:**  
PBS Only

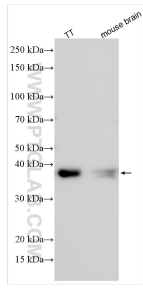
For technical support and original validation data for this product please contact:

T: 1 (888) 4PTGLAB (1-888-478-4522) (toll free  
in USA), or 1(312) 455-8498 (outside USA)

E: [proteintech@ptglab.com](mailto:proteintech@ptglab.com)  
W: [ptglab.com](http://ptglab.com)

**This product is exclusively available under Proteintech Group brand and is not available to purchase from any other manufacturer.**

## Selected Validation Data



Various lysates were subjected to SDS PAGE followed by western blot with 31577-1-AP (SCRT1 antibody) at dilution of 1:1000 incubated at room temperature for 1.5 hours. This data was developed using the same antibody clone with 31577-1-PBS in a different storage buffer formulation.