

For Research Use Only

# C11orf68 Polyclonal antibody

Catalog Number: 31587-1-AP



## Basic Information

<b>Catalog Number:</b> 31587-1-AP	<b>GenBank Accession Number:</b> BC010512	<b>Purification Method:</b> Antigen affinity Purification
<b>Size:</b> 150ul , Concentration: 400 ug/ml by Nanodrop;	<b>GeneID (NCBI):</b> 83638	<b>Recommended Dilutions:</b> WB 1:2000-1:12000
<b>Source:</b> Rabbit	<b>UNIPROT ID:</b> Q9H3H3	
<b>Isotype:</b> IgG	<b>Full Name:</b> chromosome 11 open reading frame 68	
<b>Immunogen Catalog Number:</b> AG36023	<b>Observed MW:</b> 36 kDa	

## Applications

<b>Tested Applications:</b> WB, ELISA	<b>Positive Controls:</b> WB : rat pancreas tissue, A431 cells, mouse liver tissue
<b>Species Specificity:</b> human, mouse, rat	

## Background Information

BLES03 (basophilic leukemia-expressed protein 03) is a human protein of unknown function. Recent studies have shown that BLES03 is a novel eukaryotic phosphothreonine cleavage enzyme involved in the biosynthesis of dehydrogenated amino acids. The crystal structure of BLES03 has been resolved by single-wavelength anomalous scattering (SAD) with a resolution of 2.5 Å.

## Storage

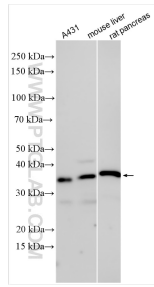
**Storage:**  
Store at -20°C. Stable for one year after shipment.  
**Storage Buffer:**  
PBS with 0.02% sodium azide and 50% glycerol pH 7.3.  
Aliquoting is unnecessary for -20°C storage

\*\*\* 20ul sizes contain 0.1% BSA

For technical support and original validation data for this product please contact:  
T: 1 (888) 4PTGLAB (1-888-478-4522) (toll free in USA), or 1(312) 455-8498 (outside USA)  
E: [proteintech@ptglab.com](mailto:proteintech@ptglab.com)  
W: [ptglab.com](http://ptglab.com)

This product is exclusively available under Proteintech Group brand and is not available to purchase from any other manufacturer.

## Selected Validation Data



Various lysates were subjected to SDS PAGE followed by western blot with 31587-1-AP (C11orf68 antibody) at dilution of 1:6000 incubated at room temperature for 1.5 hours.