

For Research Use Only

CNTD2 Polyclonal antibody, PBS Only

Catalog Number: 31588-1-PBS

Featured Product



Basic Information

Catalog Number:

31588-1-PBS

Size:

100ug, Concentration: 1 mg/ml by Nanodrop;

Source:

Rabbit

Isotype:

IgG

Immunogen Catalog Number:

AG36380

GenBank Accession Number:

NM_024877

GeneID (NCBI):

79935

UNIPROT ID:

Q9H855

Full Name:

cyclin N-terminal domain containing

2

Calculated MW:

33kDa

Observed MW:

25 kDa

Purification Method:

Antigen affinity Purification

Applications

Tested Applications:

WB, Indirect ELISA

Species Specificity:

human

Background Information

CNTD2, also known as Cyclin N-terminal domain containing 2 or CCNP, is a protein that has been implicated in cancer cell proliferation and migration, particularly in colon and lung cancers. It is an atypical cyclin that contains a cyclin box domain, which is a characteristic feature of cyclin-dependent kinase (CDK) binding partners. CNTD2 is considered an atypical cyclin due to its structural specificities, which were revealed through the human genome sequence project (PMID: 30087414). The apparent molecular mass measured by SDS-PAGE is 25 kDa.

Storage

Storage:

Store at -80°C.

Storage Buffer:

PBS Only

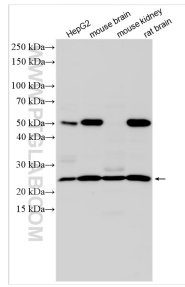
For technical support and original validation data for this product please contact:

T: 1 (888) 4PTGLAB (1-888-478-4522) (toll free in USA), or 1(312) 455-8498 (outside USA)

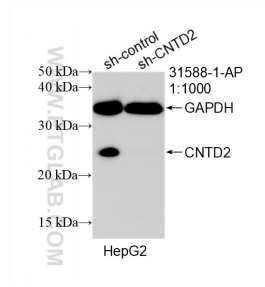
E: proteintech@ptglab.com
W: ptglab.com

This product is exclusively available under Proteintech Group brand and is not available to purchase from any other manufacturer.

Selected Validation Data



Various lysates were subjected to SDS PAGE followed by western blot with 31588-1-AP (CND2 antibody) at dilution of 1:1000 incubated at room temperature for 1.5 hours. This data was developed using the same antibody clone with 31588-1-PBS in a different storage buffer formulation.



WB result of CND2 antibody (31588-1-AP; 1:1000; incubated at room temperature for 1.5 hours) with sh-Control and sh-CND2 transfected HepG2 cells. This data was developed using the same antibody clone with 31588-1-PBS in a different storage buffer formulation.