

For Research Use Only

CSPG4 Polyclonal antibody

Catalog Number: 31623-1-AP



Basic Information

Catalog Number:

31623-1-AP

Size:

150ul , Concentration: 500 ug/ml by Nanodrop;

Source:

Rabbit

Isotype:

IgG

GenBank Accession Number:

NM_001897.5

GeneID (NCBI):

1464

UNIPROT ID:

Q6UVK1

Full Name:

chondroitin sulfate proteoglycan 4

Calculated MW:

251kd

Observed MW:

250-300 kDa

Purification Method:

Antigen affinity Purification

Recommended Dilutions:

WB 1:500-1:1000

Applications

Tested Applications:

WB, ELISA

Species Specificity:

human, mouse

Positive Controls:

WB : HeLa cells, mouse brain tissue

Background Information

CSPG4 is a proteoglycan that plays a role in cell proliferation and migration, stimulates endothelial cell motility during microvascular morphogenesis and may also inhibit neurite outgrowth and growth cone collapse during axon regeneration. CSPG4 is expressed on more than 90% of human melanoma tissues and cultured cells. It is a target of specific diagnosis and immunotherapy with anti-idiotypic antibodies due, in part, to its roles in growth control, adhesion, cell-substratum interactions, and cell-cell contacts (PMID: 10587647; 11278606).

Storage

Storage:

Store at -20°C. Stable for one year after shipment.

Storage Buffer:

PBS with 0.02% sodium azide and 50% glycerol pH 7.3.

Aliquoting is unnecessary for -20°C storage

*** 20ul sizes contain 0.1% BSA

For technical support and original validation data for this product please contact:

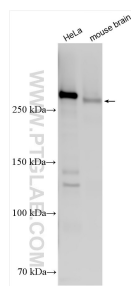
T: 1 (888) 4PTGLAB (1-888-478-4522) (toll free in USA), or 1(312) 455-8498 (outside USA)

E: proteintech@ptglab.com

W: ptglab.com

This product is exclusively available under Proteintech Group brand and is not available to purchase from any other manufacturer.

Selected Validation Data



Various lysates were subjected to SDS PAGE followed by western blot with 31623-1-AP (CSPG4 antibody) at dilution of 1:800 incubated at room temperature for 1.5 hours.