

For Research Use Only

# CRYZ Polyclonal antibody

Catalog Number: 31629-1-AP



## Basic Information

Catalog Number:

31629-1-AP

Size:

150ul , Concentration: 450 ug/ml by Nanodrop;

Source:

Rabbit

Isotype:

IgG

Immunogen Catalog Number:

AG35066

GenBank Accession Number:

BC039578

GeneID (NCBI):

1429

UNIPROT ID:

Q08257

Full Name:

crystallin, zeta (quinone reductase)

Calculated MW:

35 kDa

Observed MW:

35 kDa

Purification Method:

Antigen affinity Purification

Recommended Dilutions:

WB 1:1000-1:4000

## Applications

Tested Applications:

WB, ELISA

Species Specificity:

human, mouse

Positive Controls:

WB : mouse kidney tissue, mouse liver tissue

## Background Information

CRYZ (Zeta-crystallin) also called quinone oxidoreductase and NADPH:quinone reductase, and it does not have alcohol dehydrogenase activity. It binds NADP and acts through a one-electron transfer process. Orthoquinones, such as 1,2-naphthoquinone or 9,10-phenanthrenequinone, are the best substrates (in vitro) for CRYZ. It may act in the detoxification of xenobiotics. CRYZ interacts with (AU)-rich elements (ARE) in the 3'-UTR of target mRNA species and enhances the stability of mRNA coding for BCL2. NADPH binding interferes with mRNA binding (PMID: 17497241; 20103721).

## Storage

Storage:

Store at -20°C. Stable for one year after shipment.

Storage Buffer:

PBS with 0.02% sodium azide and 50% glycerol pH 7.3.

Aliquoting is unnecessary for -20°C storage

\*\*\* 20ul sizes contain 0.1% BSA

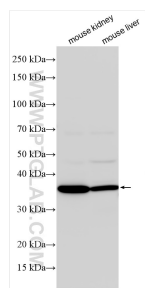
For technical support and original validation data for this product please contact:

T: 1 (888) 4PTGLAB (1-888-478-4522) (toll free in USA), or 1(312) 455-8498 (outside USA)

E: [proteintech@ptglab.com](mailto:proteintech@ptglab.com)  
W: [ptglab.com](http://ptglab.com)

This product is exclusively available under Proteintech Group brand and is not available to purchase from any other manufacturer.

## Selected Validation Data



Various lysates were subjected to SDS PAGE followed by western blot with 31629-1-AP (CRYZ antibody) at dilution of 1:2000 incubated at room temperature for 1.5 hours.