

For Research Use Only

# HAPLN1 Polyclonal antibody

Catalog Number: 31646-1-AP



## Basic Information

Catalog Number:

31646-1-AP

Size:

150ul , Concentration: 650 ug/ml by Nanodrop;

Source:

Rabbit

Isotype:

IgG

Immunogen Catalog Number:

AG35652

GenBank Accession Number:

BC057808

GeneID (NCBI):

1404

UNIPROT ID:

P10915

Full Name:

hyaluronan and proteoglycan link protein 1

Calculated MW:

40 kDa

Observed MW:

40 kDa

Purification Method:

Antigen affinity Purification

Recommended Dilutions:

WB 1:500-1:1000

## Applications

Tested Applications:

WB, ELISA

Species Specificity:

mouse, rat

Positive Controls:

WB : mouse brain tissue, rat brain tissue

## Background Information

HAPLN1 (hyaluronan and proteoglycan link protein 1), also known as CRTL1. It is expected to be located in the cytoplasm and extracellular, and the protein is mainly expressed in placenta and small intestine. The calculated molecular weight of HAPLN1 is 40 kDa. HAPLN1 binds to aggrecan on the hyaluronic chain, stabilizing the aggregates and thus increasing compression resistance and shock absorption. HAPLN1 also functions as a growth factor, up regulating aggrecan and type II collagen synthesis in cartilage. It seems to be an essential part of cartilage homeostasis and may also contribute to homeostasis in the disc tissue (PMID: 23537453).

## Storage

Storage:

Store at -20°C. Stable for one year after shipment.

Storage Buffer:

PBS with 0.02% sodium azide and 50% glycerol pH 7.3.

Aliquoting is unnecessary for -20°C storage

\*\*\* 20ul sizes contain 0.1% BSA

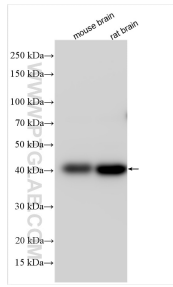
For technical support and original validation data for this product please contact:

T: 1 (888) 4PTGLAB (1-888-478-4522) (toll free in USA), or 1(312) 455-8498 (outside USA)

E: [proteintech@ptglab.com](mailto:proteintech@ptglab.com)  
W: [ptglab.com](http://ptglab.com)

This product is exclusively available under Proteintech Group brand and is not available to purchase from any other manufacturer.

## Selected Validation Data



Various lysates were subjected to SDS PAGE followed by western blot with 31646-1-AP (HAPLN1 antibody) at dilution of 1:800 incubated at room temperature for 1.5 hours.