

For Research Use Only

HAPLN1 Polyclonal antibody, PBS Only

Catalog Number: 31646-1-PBS



Basic Information

| | | |
|---|---|--|
| Catalog Number: 31646-1-PBS | GenBank Accession Number: BC057808 | Purification Method: Antigen affinity Purification |
| Size: 100ug , Concentration: 1 mg/ml by Nanodrop; | GeneID (NCBI): 1404 | |
| Source: Rabbit | UNIPROT ID: P10915 | |
| Isotype: IgG | Full Name: hyaluronan and proteoglycan link protein 1 | |
| Immunogen Catalog Number: AG35652 | Calculated MW: 40 kDa | |
| | Observed MW: 40 kDa | |

Applications

Tested Applications:
WB, Indirect ELISA

Species Specificity:
mouse, rat

Background Information

HAPLN1 (hyaluronan and proteoglycan link protein 1), also known as CRTL1. It is expected to be located in the cytoplasm and extracellular, and the protein is mainly expressed in placenta and small intestine. The calculated molecular weight of HAPLN1 is 40 kDa. HAPLN1 binds to aggrecan on the hyaluronic chain, stabilizing the aggregates and thus increasing compression resistance and shock absorption. HAPLN1 also functions as a growth factor, up regulating aggrecan and type II collagen synthesis in cartilage. It seems to be an essential part of cartilage homeostasis and may also contribute to homeostasis in the disc tissue (PMID: 23537453).

Storage

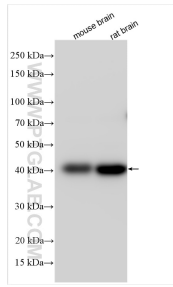
Storage:
Store at -80°C.

Storage Buffer:
PBS Only

For technical support and original validation data for this product please contact:
T: 1 (888) 4PTGLAB (1-888-478-4522) (toll free in USA), or 1(312) 455-8498 (outside USA) E: proteintech@ptglab.com
W: ptglab.com

This product is exclusively available under Proteintech Group brand and is not available to purchase from any other manufacturer.

Selected Validation Data



Various lysates were subjected to SDS PAGE followed by western blot with 31646-1-AP (HAPLN1 antibody) at dilution of 1:800 incubated at room temperature for 1.5 hours. This data was developed using the same antibody clone with 31646-1-PBS in a different storage buffer formulation.