

For Research Use Only

CHML Polyclonal antibody

Catalog Number: 31663-1-AP



Basic Information

Catalog Number:

31663-1-AP

Size:

150ul , Concentration: 500 ug/ml by Nanodrop;

Source:

Rabbit

Isotype:

IgG

Immunogen Catalog Number:

AG35925

GenBank Accession Number:

NM_001821.3

GeneID (NCBI):

1122

UNIPROT ID:

P26374

Full Name:

choroideremia-like (Rab escort protein 2)

Calculated MW:

74kDa 656aa

Observed MW:

90-100 kDa

Purification Method:

Antigen affinity Purification

Recommended Dilutions:

WB 1:500-1:3000

Applications

Tested Applications:

WB, ELISA

Species Specificity:

human

Positive Controls:

WB : A549 cells, HEK-293T cells, NCI-H1299 cells

Storage

Storage:

Store at -20°C. Stable for one year after shipment.

Storage Buffer:

PBS with 0.02% sodium azide and 50% glycerol pH 7.3.

Aliquoting is unnecessary for -20°C storage

*** 20ul sizes contain 0.1% BSA

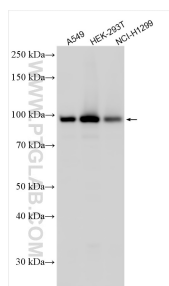
For technical support and original validation data for this product please contact:

T: 1 (888) 4PTGLAB (1-888-478-4522) (toll free in USA), or 1(312) 455-8498 (outside USA)

E: proteintech@ptglab.com
W: ptglab.com

This product is exclusively available under Proteintech Group brand and is not available to purchase from any other manufacturer.

Selected Validation Data



Various lysates were subjected to SDS PAGE followed by western blot with 31663-1-AP (CHML antibody) at dilution of 1:1500 incubated at room temperature for 1.5 hours.