

For Research Use Only

INTS6 Polyclonal antibody

Catalog Number: 31664-1-AP



Basic Information

Catalog Number: 31664-1-AP	GenBank Accession Number: BC039829	Purification Method: Antigen affinity Purification
Size: 150ul , Concentration: 380 ug/ml by Nanodrop;	GeneID (NCBI): 26512	Recommended Dilutions: WB 1:2000-1:10000 IHC 1:50-1:500
Source: Rabbit	UNIPROT ID: Q9UL03	
Isotype: IgG	Full Name: integrator complex subunit 6	
Immunogen Catalog Number: AG36146	Calculated MW: 100 kDa	
	Observed MW: 130 kDa	

Applications

Tested Applications: WB, IHC, ELISA	Positive Controls:
Species Specificity: human	WB : DU 145 cells, HuH-7 cells, L02 cells, PC-3 cells, LNCaP cells
Note-IHC: suggested antigen retrieval with TE buffer pH 9.0; (*) Alternatively, antigen retrieval may be performed with citrate buffer pH 6.0	IHC : human ovary cancer tissue,

Background Information

INTS6 is a component of the Integrator (INT) complex, a complex involved in the small nuclear RNAs (snRNA) U1 and U2 transcription and in their 3'-box-dependent processing.

Storage

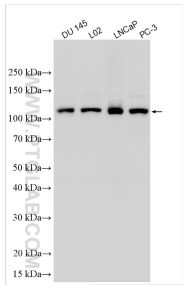
Storage:
Store at -20°C. Stable for one year after shipment.
Storage Buffer:
PBS with 0.02% sodium azide and 50% glycerol pH 7.3.
Aliquoting is unnecessary for -20°C storage

*** 20ul sizes contain 0.1% BSA

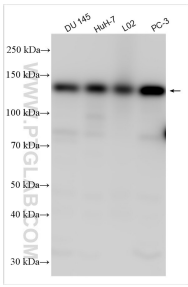
For technical support and original validation data for this product please contact:
T: 1 (888) 4PTGLAB (1-888-478-4522) (toll free in USA), or 1(312) 455-8498 (outside USA)
E: proteintech@ptglab.com
W: ptglab.com

This product is exclusively available under Proteintech Group brand and is not available to purchase from any other manufacturer.

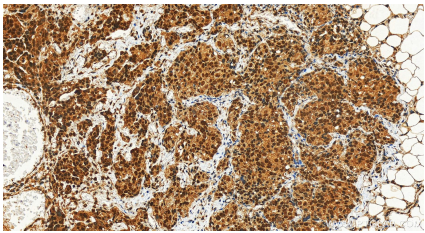
Selected Validation Data



Various lysates were subjected to SDS PAGE followed by western blot with 31664-1-AP (INTS6 antibody) at dilution of 1:5000 incubated at room temperature for 1.5 hours.



Various lysates were subjected to SDS PAGE followed by western blot with 31664-1-AP (INTS6 antibody) at dilution of 1:1500 incubated at room temperature for 1.5 hours.



Immunohistochemical analysis of paraffin-embedded human ovary cancer tissue slide using 31664-1-AP (INTS6 antibody) at dilution of 1:200 (under 20x lens). Heat mediated antigen retrieval with Tris-EDTA buffer (pH 9.0).