

For Research Use Only

# UMODL1 Polyclonal antibody

Catalog Number: 31666-1-AP



## Basic Information

<b>Catalog Number:</b> 31666-1-AP	<b>GenBank Accession Number:</b> BC167790	<b>Purification Method:</b> Antigen affinity Purification
<b>Size:</b> 150ul , Concentration: 440 ug/ml by Nanodrop;	<b>GeneID (NCBI):</b> 89766	<b>Recommended Dilutions:</b> WB: 1:500-1:1000
<b>Source:</b> Rabbit	<b>UNIPROT ID:</b> Q5D1D0	
<b>Isotype:</b> IgG	<b>Full Name:</b> uromodulin-like 1	
<b>Immunogen Catalog Number:</b> AG36223	<b>Observed MW:</b> 136-157 kDa	

## Applications

<b>Tested Applications:</b> WB, ELISA	<b>Positive Controls:</b> WB : Saos-2 cells, mouse testis tissue, TT cells
<b>Species Specificity:</b> human, mouse	

## Background Information

UMODL1(Uromodulin-like 1, uromodulin-like protein 1) is an important functional glycoprotein, belonging to the uromodulin (UMOD) gene family. Members of this family are usually expressed in kidney and urinary system, and play a role in the structure and function of extracellular matrix. Protein is located in extracellular matrix, and some studies have pointed out that UMODL1 can be used as one of the predictive markers of diabetes in multi-omics. It is involved in the process of fat development and the cell response to gonadotropin-releasing hormone (GnRH). It may also play a role in the development of ovarian follicles and participate in the migration of neutrophils. There are many isoforms, and the predicted molecular weight is 136-157 kDa.

## Storage

**Storage:**  
Store at -20°C. Stable for one year after shipment.  
**Storage Buffer:**  
PBS with 0.02% sodium azide and 50% glycerol, pH7.3  
Aliquoting is unnecessary for -20°C storage

\*\*\* 20ul sizes contain 0.1% BSA

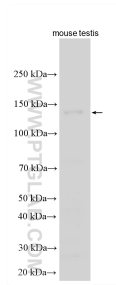
For technical support and original validation data for this product please contact:

T: 1 (888) 4PTGLAB (1-888-478-4522) (toll free in USA), or 1(312) 455-8498 (outside USA)

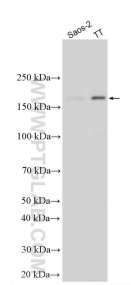
E: [proteintech@ptglab.com](mailto:proteintech@ptglab.com)  
W: [ptglab.com](http://ptglab.com)

This product is exclusively available under Proteintech Group brand and is not available to purchase from any other manufacturer.

## Selected Validation Data



Various lysates were subjected to SDS PAGE followed by western blot with 31666-1-AP (UMODL1 antibody) at dilution of 1:500 incubated at room temperature for 1.5 hours.



Various lysates were subjected to SDS PAGE followed by western blot with 31666-1-AP (UMODL1 antibody) at dilution of 1:500 incubated at room temperature for 1.5 hours.