

For Research Use Only

LYRM2 Polyclonal antibody, PBS Only

Catalog Number: 31674-1-PBS



Basic Information

Catalog Number:

31674-1-PBS

Size:

100ug, Concentration: 1 mg/ml by
Nanodrop;

Source:

Rabbit

Isotype:

IgG

Immunogen Catalog Number:

AG36366

GenBank Accession Number:

BC009782

GeneID (NCBI):

57226

UNIPROT ID:

Q9NU23

Full Name:

LYR motif containing 2

Observed MW:

10 kDa

Purification Method:

Antigen affinity Purification

Applications

Tested Applications:

IP, Indirect ELISA

Species Specificity:

human

Background Information

LYR motif containing 2 (LYRM2) is an evolutionarily conserved gene which belongs to LYR (leucine-tyrosine-arginine) motif proteins (LYRMs) family. LYRM2 is the one of the top ten most significantly upregulated differentially expressed genes in trabecular osteocytes between osteoporosis and normal controls (PMID: 34252604), which is up-regulated in colorectal cancer and promotes tumor growth both in vivo and in vitro. LYRM2 locates in the mitochondrial inner membrane and matrix (PMID: 31004700).

Storage

Storage:

Store at -80°C.

Storage Buffer:

PBS only, pH7.3

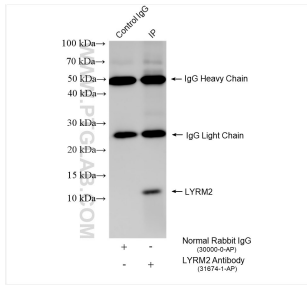
For technical support and original validation data for this product please contact:

T: 1 (888) 4PTGLAB (1-888-478-4522) (toll free
in USA), or 1(312) 455-8498 (outside USA)

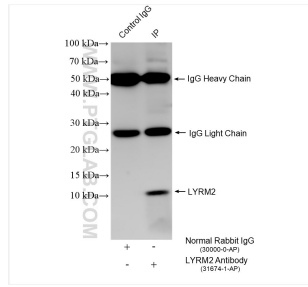
E: proteintech@ptglab.com
W: ptglab.com

This product is exclusively available under Proteintech Group brand and is not available to purchase from any other manufacturer.

Selected Validation Data



IP result of anti-LYRM2 (IP:31674-1-AP, 4ug; Detection:31674-1-AP 1:500) with COLO 320 cells lysate 1920 ug. This data was developed using the same antibody clone with 31674-1-PBS in a different storage buffer formulation.



IP result of anti-LYRM2 (IP:31674-1-AP, 4ug; Detection:31674-1-AP 1:500) with HT-29 cells lysate 1760 ug. This data was developed using the same antibody clone with 31674-1-PBS in a different storage buffer formulation.