

For Research Use Only

INSM1 Polyclonal antibody

Catalog Number: 31681-1-AP



Basic Information

Catalog Number: 31681-1-AP	GenBank Accession Number: NM_002196	Purification Method: Antigen affinity Purification
Size: 150ul , Concentration: 500 ug/ml by Nanodrop;	GeneID (NCBI): 3642	Recommended Dilutions: WB 1:1000-1:4000
Source: Rabbit	UNIPROT ID: Q01101	
Isotype: IgG	Full Name: insulinoma-associated 1	
Immunogen Catalog Number: AG33774	Calculated MW: 53 kDa	
	Observed MW: 53-60 kDa	

Applications

Tested Applications: WB, ELISA	Positive Controls: WB : mouse brain tissue, rat brain tissue
Species Specificity: human, mouse, rat	

Background Information

Insulinoma-associated-1 (INSM1) is a zinc-finger transcription factor that was originally identified in a human insulinoma subtraction library. INSM1 plays a cardinal role as a transcription factor in the differentiation of embryonic neuroendocrine cells. In situ hybridization studies of human tissues have shown the presence of the INSM1 transcript across various brain regions, as well as in endocrine organs such as the pancreas, adrenal gland, thymus, thyroid, and the endocrine cells of the gastrointestinal tract. (PMID: 34943408, PMID: 36290282)

Storage

Storage:
Store at -20°C. Stable for one year after shipment.
Storage Buffer:
PBS with 0.02% sodium azide and 50% glycerol, pH7.3
Aliquoting is unnecessary for -20°C storage

*** 20ul sizes contain 0.1% BSA

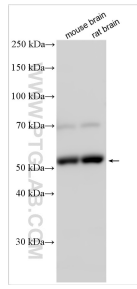
For technical support and original validation data for this product please contact:

T: 1 (888) 4PTGLAB (1-888-478-4522) (toll free in USA), or 1(312) 455-8498 (outside USA)

E: proteintech@ptglab.com
W: ptglab.com

This product is exclusively available under Proteintech Group brand and is not available to purchase from any other manufacturer.

Selected Validation Data



Various lysates were subjected to SDS PAGE followed by western blot with 31681-1-AP (INSM1 antibody) at dilution of 1:2000 incubated at room temperature for 1.5 hours.