

For Research Use Only

# INSM1 Polyclonal antibody, PBS Only

Catalog Number: 31681-1-PBS



## Basic Information

**Catalog Number:**

31681-1-PBS

**Size:**

100ug, Concentration: 1 mg/ml by Nanodrop;

**Source:**

Rabbit

**Isotype:**

IgG

**Immunogen Catalog Number:**

AG33774

**GenBank Accession Number:**

NM\_002196

**GeneID (NCBI):**

3642

**UNIPROT ID:**

Q01101

**Full Name:**

insulinoma-associated 1

**Calculated MW:**

53 kDa

**Observed MW:**

53-60 kDa

**Purification Method:**

Antigen affinity Purification

## Applications

**Tested Applications:**

WB, Indirect ELISA

**Species Specificity:**

human, mouse, rat

## Background Information

Insulinoma-associated-1 (INSM1) is a zinc-finger transcription factor that was originally identified in a human insulinoma subtraction library. INSM1 plays a cardinal role as a transcription factor in the differentiation of embryonic neuroendocrine cells. In situ hybridization studies of human tissues have shown the presence of the INSM1 transcript across various brain regions, as well as in endocrine organs such as the pancreas, adrenal gland, thymus, thyroid, and the endocrine cells of the gastrointestinal tract. (PMID: 34943408, PMID: 36290282)

## Storage

**Storage:**

Store at -80°C.

**Storage Buffer:**

PBS only, pH7.3

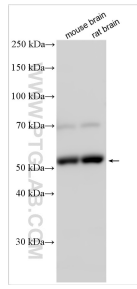
For technical support and original validation data for this product please contact:

T: 1 (888) 4PTGLAB (1-888-478-4522) (toll free in USA), or 1(312) 455-8498 (outside USA)

E: [proteintech@ptglab.com](mailto:proteintech@ptglab.com)  
W: [ptglab.com](http://ptglab.com)

**This product is exclusively available under Proteintech Group brand and is not available to purchase from any other manufacturer.**

## Selected Validation Data



Various lysates were subjected to SDS PAGE followed by western blot with 31681-1-AP (INSM1 antibody) at dilution of 1:2000 incubated at room temperature for 1.5 hours. This data was developed using the same antibody clone with 31681-1-PBS in a different storage buffer formulation.