

For Research Use Only

# ARFGEF1 Polyclonal antibody

Catalog Number: 31684-1-AP



## Basic Information

<b>Catalog Number:</b> 31684-1-AP	<b>GenBank Accession Number:</b> NM_001413184	<b>Purification Method:</b> Antigen affinity Purification
<b>Size:</b> 150ul , Concentration: 400 ug/ml by Nanodrop;	<b>GeneID (NCBI):</b> 10565	<b>Recommended Dilutions:</b> WB 1:500-1:2000 IHC 1:50-1:500
<b>Source:</b> Rabbit	<b>UNIPROT ID:</b> Q9Y6D6	
<b>Isotype:</b> IgG	<b>Full Name:</b> ADP-ribosylation factor guanine nucleotide-exchange factor 1(brefeldin A-inhibited)	
<b>Immunogen Catalog Number:</b> AG35629	<b>Calculated MW:</b> 208kDa <b>Observed MW:</b> 210 kDa	

## Applications

<b>Tested Applications:</b> WB, IHC, ELISA	<b>Positive Controls:</b>
<b>Species Specificity:</b> human, mouse	<b>WB :</b> BxPC-3 cells, HEK-293T cells, HeLa cells, NIH/3T3 cells, mouse lung tissue
<b>Note-IHC:</b> <i>suggested antigen retrieval with <b>TE buffer pH 9.0</b>; (*) Alternatively, antigen retrieval may be performed with <b>citrate buffer pH 6.0</b></i>	<b>IHC :</b> human ovary cancer tissue,

## Background Information

ARFGEF1 (ADP ribosylation factor guanine nucleotide exchange factor 1), also known as BIG1 (Brefeldin A-inhibited guanine nucleotide exchange protein 1), is one of the ADP ribosylation factor (ARF) guanine nucleotide exchange factor (GEF) with a conserved catalytic sec7 domain. ARFGEF1 is connected with trafficking regulation through the trans-Golgi network and endosomes (PMID: 35090882).

## Storage

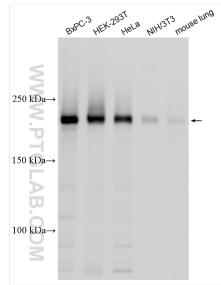
**Storage:**  
Store at -20°C. Stable for one year after shipment.  
**Storage Buffer:**  
PBS with 0.02% sodium azide and 50% glycerol pH 7.3.  
**Aliquoting is unnecessary for -20°C storage**

**\*\*\* 20ul sizes contain 0.1% BSA**

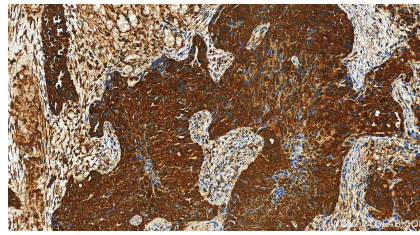
For technical support and original validation data for this product please contact:  
T: 1 (888) 4PTGLAB (1-888-478-4522) (toll free in USA), or 1(312) 455-8498 (outside USA)  
E: [proteintech@ptglab.com](mailto:proteintech@ptglab.com)  
W: [ptglab.com](http://ptglab.com)

This product is exclusively available under Proteintech Group brand and is not available to purchase from any other manufacturer.

## Selected Validation Data



Various lysates were subjected to SDS PAGE followed by western blot with 31684-1-AP (ARFGEF1 antibody) at dilution of 1:1000 incubated at room temperature for 1.5 hours.



Immunohistochemical analysis of paraffin-embedded human ovary cancer tissue slide using 31684-1-AP (ARFGEF1 antibody) at dilution of 1:200 (under 20x lens). Heat mediated antigen retrieval with Tris-EDTA buffer (pH 9.0).