

For Research Use Only

# ATP2B3/PMCA3 Polyclonal antibody

Catalog Number: 31692-1-AP



## Basic Information

<b>Catalog Number:</b> 31692-1-AP	<b>GenBank Accession Number:</b> BC047580	<b>Purification Method:</b> Antigen affinity Purification
<b>Size:</b> 150ul , Concentration: 450 ug/ml by Nanodrop;	<b>GeneID (NCBI):</b> 492	<b>Recommended Dilutions:</b> WB 1:1000-1:8000
<b>Source:</b> Rabbit	<b>UNIPROT ID:</b> Q16720	
<b>Isotype:</b> IgG	<b>Full Name:</b> ATPase, Ca++ transporting, plasma membrane 3	
<b>Immunogen Catalog Number:</b> AG35923	<b>Observed MW:</b> 134 kDa	

## Applications

<b>Tested Applications:</b> WB, ELISA	<b>Positive Controls:</b> WB : 37°C incubated mouse brain tissue, 37°C incubated rat brain tissue
<b>Species Specificity:</b> human, mouse, rat	

## Background Information

ATP2B3 also known as PMCA3, belongs to the family of P-type primary ion transport ATPases. ATP2B3 uses ATP as an energy source to transport cytosolic Ca<sup>2+</sup> ions across the plasma membrane to the extracellular compartment. ATP2B3 is highly expressed in the brain and cerebellum and is important in regulating neuronal Ca<sup>2+</sup>. Mutations in ATP2B3 are associated with X-linked spinocerebellar ataxia-1 (PMID: 25953895, 22912398).

## Storage

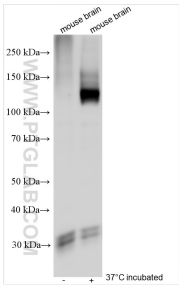
**Storage:**  
Store at -20°C. Stable for one year after shipment.  
**Storage Buffer:**  
PBS with 0.02% sodium azide and 50% glycerol pH 7.3.  
Aliquoting is unnecessary for -20°C storage

\*\*\* 20ul sizes contain 0.1% BSA

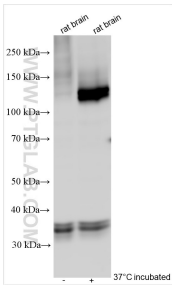
For technical support and original validation data for this product please contact:  
T: 1 (888) 4PTGLAB (1-888-478-4522) (toll free in USA), or 1(312) 455-8498 (outside USA)  
E: [proteintech@ptglab.com](mailto:proteintech@ptglab.com)  
W: [ptglab.com](http://ptglab.com)

This product is exclusively available under Proteintech Group brand and is not available to purchase from any other manufacturer.

Selected Validation Data



Various lysates were subjected to SDS PAGE followed by western blot with 31692-1-AP (ATP2B3/PMCA3 antibody) at dilution of 1:4000 incubated at room temperature for 1.5 hours.



Various lysates were subjected to SDS PAGE followed by western blot with 31692-1-AP (ATP2B3/PMCA3 antibody) at dilution of 1:4000 incubated at room temperature for 1.5 hours.