

For Research Use Only

# TLN2 Polyclonal antibody, PBS Only

Catalog Number: 31695-1-PBS



## Basic Information

**Catalog Number:**

31695-1-PBS

**Size:**

100ug , Concentration: 1 mg/ml by Nanodrop;

**Source:**

Rabbit

**Isotype:**

IgG

**Immunogen Catalog Number:**

AG36217

**GenBank Accession Number:**

NM\_015059

**GeneID (NCBI):**

83660

**UNIPROT ID:**

Q9Y4G6

**Full Name:**

talin 2

**Calculated MW:**

271kDa

**Observed MW:**

250 kDa

**Purification Method:**

Antigen affinity Purification

## Applications

**Tested Applications:**

WB, Indirect ELISA

**Species Specificity:**

human

## Background Information

Talin is a macromolecular cytoskeleton protein located on the extracellular matrix (ECM) that can bind to a variety of adhesion molecules (e.g., integrin, actin, and adhesion kinase). Humans have two Talin genes, TLN1 and TLN2, which encode Talin 1 and Talin 2 proteins respectively. TLN2 has 74% homology with TLN1.

## Storage

**Storage:**

Store at -80°C.

**Storage Buffer:**

PBS only, pH7.3

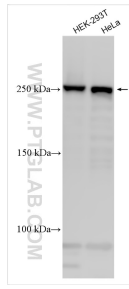
For technical support and original validation data for this product please contact:

T: 1 (888) 4PTGLAB (1-888-478-4522) (toll free in USA), or 1(312) 455-8498 (outside USA)

E: [proteintech@ptglab.com](mailto:proteintech@ptglab.com)  
W: [ptglab.com](http://ptglab.com)

**This product is exclusively available under Proteintech Group brand and is not available to purchase from any other manufacturer.**

## Selected Validation Data



Various lysates were subjected to SDS PAGE followed by western blot with 31695-1-AP (TLN2 antibody) at dilution of 1:800 incubated at room temperature for 1.5 hours. This data was developed using the same antibody clone with 31695-1-PBS in a different storage buffer formulation.