

For Research Use Only

CWF19L1 Polyclonal antibody

Catalog Number: 31700-1-AP



Basic Information

Catalog Number: 31700-1-AP	GenBank Accession Number: BC008746	Purification Method: Antigen affinity Purification
Size: 150ul , Concentration: 500 ug/ml by Nanodrop;	GeneID (NCBI): 55280	Recommended Dilutions: WB 1:5000-1:50000
Source: Rabbit	UNIPROT ID: Q69YN2	
Isotype: IgG	Full Name: CWF19-like 1, cell cycle control (S. pombe)	
Immunogen Catalog Number: AG36356	Observed MW: 60-65 kDa	

Applications

Tested Applications: WB, ELISA	Positive Controls: WB : Jurkat cells, K-562 cells, MCF-7 cells
Species Specificity: human	

Background Information

CWF19L1 belongs to the CWF19 family. CWF19L1 includes a metallopeptidase (MMP) domain, a histidine triad motif (HIT) domain, and a C-terminal Cwf-J-C domain. CWF19L1 is believed to be involved in cell cycle control, endosomal trafficking, and mRNA processing. CWF19L1 is a rare cause of autosomal recessive cerebellar ataxias (ARCA) (PMID: 36357319, PMID: 36453471). CWF19L1 is expressed in many brain regions, including cerebellum, thalamus and occipital, parietal and temporal lobes. CWF19L1 is also expressed in the spinal cord (PMID: 25361784).

Storage

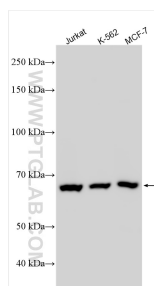
Storage:
Store at -20°C. Stable for one year after shipment.
Storage Buffer:
PBS with 0.02% sodium azide and 50% glycerol pH 7.3.
Aliquoting is unnecessary for -20°C storage

*** 20ul sizes contain 0.1% BSA

For technical support and original validation data for this product please contact:
T: 1 (888) 4PTGLAB (1-888-478-4522) (toll free in USA), or 1(312) 455-8498 (outside USA)
E: proteintech@ptglab.com
W: ptglab.com

This product is exclusively available under Proteintech Group brand and is not available to purchase from any other manufacturer.

Selected Validation Data



Various lysates were subjected to SDS PAGE followed by western blot with 31700-1-AP (CWF19L1 antibody) at dilution of 1:15000 incubated at room temperature for 1.5 hours.