

For Research Use Only

# CSDA Polyclonal antibody

Catalog Number: 31704-1-AP

Featured Product



## Basic Information

### Catalog Number:

31704-1-AP

### Size:

150ul, Concentration: 200 ug/ml by Nanodrop;

### Source:

Rabbit

### Isotype:

IgG

### Immunogen Catalog Number:

AG36519

### GenBank Accession Number:

BC008801

### GeneID (NCBI):

8531

### UNIPROT ID:

P16989

### Full Name:

cold shock domain protein A

### Calculated MW:

40 kDa

### Observed MW:

60-68 kDa

### Purification Method:

Antigen affinity Purification

### Recommended Dilutions:

WB 1:500-1:2000

IF/ICC 1:200-1:800

## Applications

### Tested Applications:

WB, IF/ICC, ELISA

### Species Specificity:

human, mouse

### Positive Controls:

WB : mouse heart tissue, KYSE-30 cells, mouse liver tissue, mouse skeletal muscle tissue

IF/ICC : U2OS cells,

## Background Information

CSDA (Cold shock domain protein A), also known as DBPA (DNA-binding protein A), YBX3 (Y-box protein 3), is a DNA-binding protein that represses angiogenesis and lymphangiogenesis by directly binding to hypoxia response element (HRE) and serum response element (SRE). CSDA is ubiquitous expressed in human skeletal muscle, heart, and decidal cells, which is thought to a multifunctional epithelial-specific protein involved in gene transcription, DNA repair, and interaction with other proteins (PMID: 33816248). CSDA is a nucleic-acid-binding protein that directly regulates gene expression by using different mechanisms, and acts as a translational repressor (e.g., MYH9 and SPTBN1) and positive regulator of mRNA stability (PMID: 31189097). Western blot analysis detected CSDA at a range of 50-70 kDa due to the anomalous mobility of Y-box proteins (PMID: 38255791).

## Storage

### Storage:

Store at -20°C. Stable for one year after shipment.

### Storage Buffer:

PBS with 0.02% sodium azide and 50% glycerol pH 7.3.

Aliquoting is unnecessary for -20°C storage

\*\*\* 20ul sizes contain 0.1% BSA

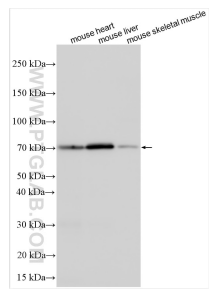
For technical support and original validation data for this product please contact:

T: 1 (888) 4PTGLAB (1-888-478-4522) (toll free in USA), or 1(312) 455-8498 (outside USA)

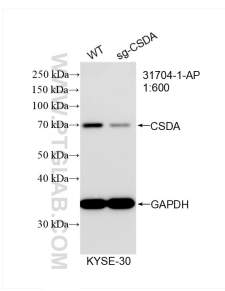
E: [proteintech@ptglab.com](mailto:proteintech@ptglab.com)  
W: [ptglab.com](http://ptglab.com)

This product is exclusively available under Proteintech Group brand and is not available to purchase from any other manufacturer.

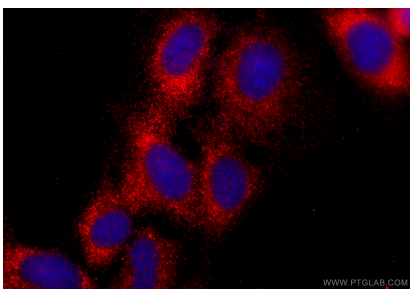
Selected Validation Data



mouse heart tissue were subjected to SDS PAGE followed by western blot with 31704-1-AP (CSDA antibody) at dilution of 1:1000 incubated at room temperature for 1.5 hours.



WB result of CSDA antibody (31704-1-AP; 1:1000; room temperature for 1.5 hours) with wild-type and CSDA knockout KYSE-30 cells.



Immunofluorescent analysis of (-20°C Ethanol) fixed U2OS cells using CSDA antibody (31704-1-AP) at dilution of 1:400 and CoraLite®594-Conjugated Goat Anti-Rabbit IgG(H+L) (SA00013-4).