

For Research Use Only

PTPRS Polyclonal antibody, PBS Only

Catalog Number: 31720-1-PBS



Basic Information

Catalog Number:

31720-1-PBS

Size:

100ug, Concentration: 1 mg/ml by Nanodrop;

Source:

Rabbit

Isotype:

IgG

GenBank Accession Number:

NM_002850

GeneID (NCBI):

5802

UNIPROT ID:

Q13332

Full Name:

protein tyrosine phosphatase, receptor type, S

Calculated MW:

217 kDa

Observed MW:

140 kDa

Purification Method:

Antigen affinity Purification

Applications

Tested Applications:

WB, Indirect ELISA

Species Specificity:

human, mouse

Background Information

Protein tyrosine phosphatase receptor type S (PTPRS, also known as R-PTP-S, PTPSIGMA, and R-PTP-sigma) is an integral membrane protein. It can promote oligomerization by binding to large heparan sulfate proteoglycan structures, and interact with NTRK1/3, PPFIA1/2/3 (PMID: 25385546; 8524829; 9624153). The non-glycosylated molecular weight of PTPRS is 214 kDa, and the extracellular domain can be cleaved near the cell membrane by an endoprotease to generate a glycosylated 140 kDa protein. Variations and mutations of PTPRS are associated with Alzheimer's disease and cholangiocarcinoma (PMID: 38766183; 35991009).

Storage

Storage:

Store at -80°C.

Storage Buffer:

PBS Only

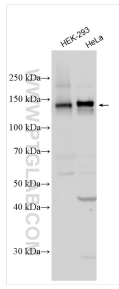
For technical support and original validation data for this product please contact:

T: 1 (888) 4PTGLAB (1-888-478-4522) (toll free in USA), or 1(312) 455-8498 (outside USA)

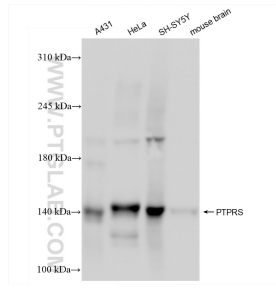
E: proteintech@ptglab.com
W: ptglab.com

This product is exclusively available under Proteintech Group brand and is not available to purchase from any other manufacturer.

Selected Validation Data



Various lysates were subjected to SDS PAGE followed by western blot with 31720-1-AP (PTPRS antibody) at dilution of 1:1000 incubated at room temperature for 1.5 hours. This data was developed using the same antibody clone with 31720-1-PBS in a different storage buffer formulation.



Various lysates were subjected to SDS PAGE followed by western blot with 31720-1-AP (PTPRS antibody) at dilution of 1:1000 incubated at room temperature for 1.5 hours. This data was developed using the same antibody clone with 31720-1-PBS in a different storage buffer formulation.