

For Research Use Only

# KBTBD6 Polyclonal antibody

Catalog Number: 31743-1-AP



## Basic Information

### Catalog Number:

31743-1-AP

### Size:

150ul , Concentration: 500 ug/ml by Nanodrop;

### Source:

Rabbit

### Isotype:

IgG

### Immunogen Catalog Number:

AG36046

### GenBank Accession Number:

BC000560

### GeneID (NCBI):

89890

### UNIPROT ID:

Q86V97

### Full Name:

kelch repeat and BTB (POZ) domain containing 6

### Observed MW:

76 kDa

### Purification Method:

Antigen affinity Purification

### Recommended Dilutions:

WB 1:500-1:2000

## Applications

### Tested Applications:

WB, ELISA

### Species Specificity:

human

### Positive Controls:

WB : Saos-2 cells, TT cells, U-251 cells

## Background Information

KBTBD6 (Kelch repeat and BTB domain-containing protein 6) is involved in proteasome-mediated ubiquitin-dependent protein catabolic process; protein K48-linked ubiquitination; and Rac protein signal transduction regulation.

## Storage

### Storage:

Store at -20°C. Stable for one year after shipment.

### Storage Buffer:

PBS with 0.02% sodium azide and 50% glycerol, pH7.3

Aliquoting is unnecessary for -20°C storage

\*\*\* 20ul sizes contain 0.1% BSA

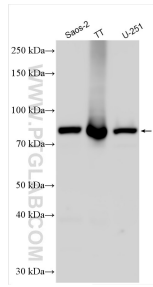
For technical support and original validation data for this product please contact:

T: 1 (888) 4PTGLAB (1-888-478-4522) (toll free in USA), or 1(312) 455-8498 (outside USA)

E: [proteintech@ptglab.com](mailto:proteintech@ptglab.com)  
W: [ptglab.com](http://ptglab.com)

This product is exclusively available under Proteintech Group brand and is not available to purchase from any other manufacturer.

## Selected Validation Data



Various lysates were subjected to SDS PAGE followed by western blot with 31743-1-AP (KBTBD6 antibody) at dilution of 1:1000 incubated at room temperature for 1.5 hours.