

For Research Use Only

# KBTBD6 Polyclonal antibody, PBS Only

Catalog Number: 31743-1-PBS



## Basic Information

**Catalog Number:**

31743-1-PBS

**Size:**

100ug , Concentration: 1 mg/ml by Nanodrop;

**Source:**

Rabbit

**Isotype:**

IgG

**Immunogen Catalog Number:**

AG36046

**GenBank Accession Number:**

BC000560

**GeneID (NCBI):**

89890

**UNIPROT ID:**

Q86V97

**Full Name:**

kelch repeat and BTB (POZ) domain containing 6

**Observed MW:**

76 kDa

**Purification Method:**

Antigen affinity Purification

## Applications

**Tested Applications:**

WB, Indirect ELISA

**Species Specificity:**

human

## Background Information

KBTBD6 (Kelch repeat and BTB domain-containing protein 6) is involved in proteasome-mediated ubiquitin-dependent protein catabolic process; protein K48-linked ubiquitination; and Rac protein signal transduction regulation.

## Storage

**Storage:**

Store at -80°C.

**Storage Buffer:**

PBS only, pH7.3

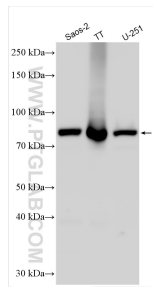
For technical support and original validation data for this product please contact:

T: 1 (888) 4PTGLAB (1-888-478-4522) (toll free in USA), or 1(312) 455-8498 (outside USA)

E: [proteintech@ptglab.com](mailto:proteintech@ptglab.com)  
W: [ptglab.com](http://ptglab.com)

This product is exclusively available under Proteintech Group brand and is not available to purchase from any other manufacturer.

## Selected Validation Data



Various lysates were subjected to SDS PAGE followed by western blot with 31743-1-AP (KBTBD6 antibody) at dilution of 1:1000 incubated at room temperature for 1.5 hours. This data was developed using the same antibody clone with 31743-1-PBS in a different storage buffer formulation.