

For Research Use Only

# C12orf30 Polyclonal antibody

Catalog Number: 31748-1-AP

Featured Product



## Basic Information

**Catalog Number:**

31748-1-AP

**Size:**

150ul, Concentration: 600 ug/ml by Nanodrop;

**Source:**

Rabbit

**Isotype:**

IgG

**Immunogen Catalog Number:**

AG36383

**GenBank Accession Number:**

BC113585

**GeneID (NCBI):**

80018

**UNIPROT ID:**

Q14CX7

**Full Name:**

chromosome 12 open reading frame 30

**Observed MW:**

113 kDa 140 kDa

**Purification Method:**

Antigen affinity Purification

**Recommended Dilutions:**

WB: 1:5000-1:50000

IP: 0.5-4.0 ug for 1.0-3.0 mg of total protein lysate

IHC: 1:1000-1:4000

IF/ICC: 1:50-1:500

## Applications

**Tested Applications:**

WB, IHC, IF/ICC, IP, ELISA

**Species Specificity:**

human, mouse

**Note-IHC: suggested antigen retrieval with TE buffer pH 9.0; (\*) Alternatively, antigen retrieval may be performed with citrate buffer pH 6.0**

**Positive Controls:**

WB: A549 cells, HeLa cells, Calu-1 cells

IP: mouse ovary tissue, HeLa cells

IHC: human colon cancer tissue, human cervical cancer tissue

IF/ICC: A431 cells,

## Background Information

The C12orf30 gene encodes an auxiliary subunit of the N-terminal acetyltransferase B (NatB) complex, which is responsible for the acetylation of methionine residues at the N-terminus of proteins. The C12orf30 protein plays a role in the distribution and morphology of organelles, and is involved in cell migration and the dynamic changes of the cytoskeleton. In addition, polymorphisms in the C12orf30 gene are associated with susceptibility to various autoimmune diseases, such as rheumatoid arthritis, juvenile idiopathic arthritis, and type 1 diabetes. The C12orf30 protein also participates in regulating the function of immune cells, influencing their signal transduction. The theoretical size of C12orf30 protein is 113 kDa, and it is possible that post-translational modifications may have shifted the protein band up to about 140 kD.

## Storage

**Storage:**

Store at -20°C. Stable for one year after shipment.

**Storage Buffer:**

PBS with 0.02% sodium azide and 50% glycerol, pH7.3

Aliquoting is unnecessary for -20°C storage

\*\*\* 20ul sizes contain 0.1% BSA

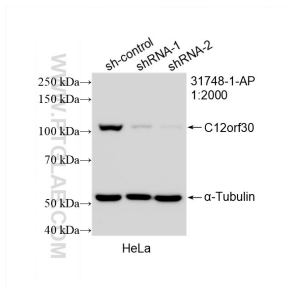
For technical support and original validation data for this product please contact:

T: 1 (888) 4PTGLAB (1-888-478-4522) (toll free in USA), or 1(312) 455-8498 (outside USA)

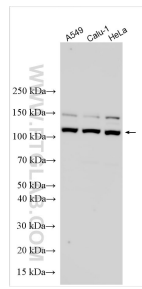
E: [proteintech@ptglab.com](mailto:proteintech@ptglab.com)  
W: [ptglab.com](http://ptglab.com)

This product is exclusively available under Proteintech Group brand and is not available to purchase from any other manufacturer.

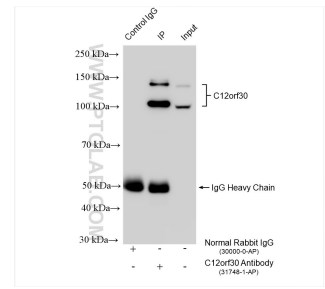
## Selected Validation Data



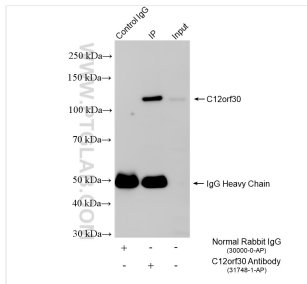
WB result of C12orf30 antibody (31748-1-AP; 1:2000; incubated at room temperature for 1.5 hours) with sh-Control and sh-C12orf30 transfected HeLa cells.



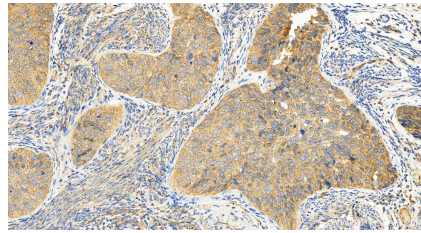
Various lysates were subjected to SDS PAGE followed by western blot with 31748-1-AP (C12orf30 antibody) at dilution of 1:10000 incubated at room temperature for 1.5 hours.



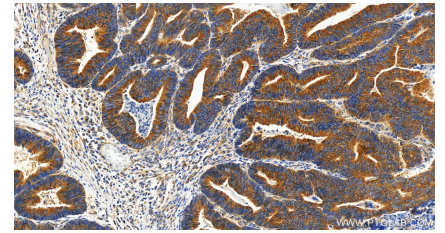
IP result of anti-C12orf30 (IP:31748-1-AP, 4ug; Detection:31748-1-AP 1:2000) with HeLa cells lysate 1280 ug.



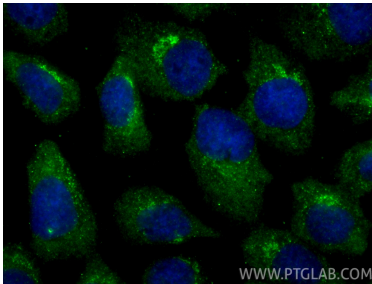
IP result of anti-C12orf30 (IP:31748-1-AP, 4ug; Detection:31748-1-AP 1:1500) with mouse ovary tissue lysate 640 ug.



Immunohistochemical analysis of paraffin-embedded human cervical cancer tissue slide using 31748-1-AP (C12orf30 antibody) at dilution of 1:2000 (under 20x lens). Heat mediated antigen retrieval with Tris-EDTA buffer (pH 9.0).



Immunohistochemical analysis of paraffin-embedded human colon cancer tissue slide using 31748-1-AP (C12orf30 antibody) at dilution of 1:2000 (under 20x lens). Heat mediated antigen retrieval with Tris-EDTA buffer (pH 9.0).



Immunofluorescent analysis of (-20°C Methanol) fixed A431 cells using C12orf30 antibody (31748-1-AP) at dilution of 1:200 and CoraLite® 488-Conjugated Goat Anti-Rabbit IgG(H+L) (SA00013-2).