

For Research Use Only

NTB-A/SLAMF6 Polyclonal antibody

Catalog Number: 31807-1-AP



Basic Information

Catalog Number:

31807-1-AP

Size:

150ul, Concentration: 450 ug/ml by Nanodrop;

Source:

Rabbit

Isotype:

IgG

GenBank Accession Number:

NM_001184714.2

GeneID (NCBI):

114836

UNIPROT ID:

Q96DU3-1

Full Name:

SLAM family member 6

Calculated MW:

37kDa

Observed MW:

50-60 kDa

Purification Method:

Antigen affinity Purification

Recommended Dilutions:

WB 1:1000-1:4000

Applications

Tested Applications:

WB, ELISA

Species Specificity:

human

Positive Controls:

WB : Daudi cells, U266 cells

Background Information

SLAMF6, also known as signaling lymphocyte activation molecule family member 6, is a protein that plays a crucial role in the immune system. SLAMF6 is a member of the SLAMF family of cell surface receptors, which are part of the immunoglobulin (Ig) superfamily. SLAMF6 is involved in the development of lymphocytes and in orchestrating both innate and adaptive immune responses. It can positively or negatively regulate immune responses, and its functions are implicated in autoimmunity and cancer.

Storage

Storage:

Store at -20°C. Stable for one year after shipment.

Storage Buffer:

PBS with 0.02% sodium azide and 50% glycerol pH 7.3.

Aliquoting is unnecessary for -20°C storage

*** 20ul sizes contain 0.1% BSA

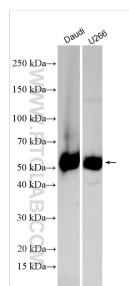
For technical support and original validation data for this product please contact:

T: 1 (888) 4PTGLAB (1-888-478-4522) (toll free in USA), or 1(312) 455-8498 (outside USA)

E: proteintech@ptglab.com
W: ptglab.com

This product is exclusively available under Proteintech Group brand and is not available to purchase from any other manufacturer.

Selected Validation Data



Various lysates were subjected to SDS PAGE followed by western blot with 31807-1-AP (NTB-A/SLAMF6 antibody) at dilution of 1:2000 incubated at room temperature for 1.5 hours.