

For Research Use Only

SYTL1 Polyclonal antibody

Catalog Number: 31834-1-AP



Basic Information

Catalog Number:

31834-1-AP

Size:

150ul, Concentration: 600 ug/ml by Nanodrop;

Source:

Rabbit

Isotype:

IgG

Immunogen Catalog Number:

AG27391

GenBank Accession Number:

BC015764

GeneID (NCBI):

84958

UNIPROT ID:

Q8IYJ3

Full Name:

synaptotagmin-like 1

Calculated MW:

62 kDa

Observed MW:

70 kDa

Purification Method:

Antigen affinity Purification

Recommended Dilutions:

WB 1:1000-1:6000

Applications

Tested Applications:

WB, ELISA

Species Specificity:

human

Positive Controls:

WB : HL-60 cells,

Background Information

Synaptotagmin-like protein 1 (SYTL1, also known as SLP1 and Exophilin-7) is a protein that plays a crucial role in vesicle trafficking and exocytosis. SYTL1 differentially regulates the secretion of prostate-specific antigen and prostatic-specific acid phosphatase (PMID: 36653850). The expression level of SYTL1 is also associated with bladder cancer progression (PMID: 36107384).

Storage

Storage:

Store at -20°C. Stable for one year after shipment.

Storage Buffer:

PBS with 0.02% sodium azide and 50% glycerol pH 7.3.

Aliquoting is unnecessary for -20°C storage

***** 20ul sizes contain 0.1% BSA**

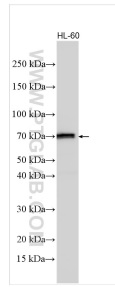
For technical support and original validation data for this product please contact:

T: 1 (888) 4PTGLAB (1-888-478-4522) (toll free in USA), or 1(312) 455-8498 (outside USA)

E: proteintech@ptglab.com
W: ptglab.com

This product is exclusively available under Proteintech Group brand and is not available to purchase from any other manufacturer.

Selected Validation Data



Various lysates were subjected to SDS PAGE followed by western blot with 31834-1-AP (SYTL1 antibody) at dilution of 1:3000 incubated at room temperature for 1.5 hours.