

For Research Use Only

SLX4 Polyclonal antibody

Catalog Number: 31867-1-AP



Basic Information

Catalog Number: 31867-1-AP	GenBank Accession Number: BC036335	Purification Method: Antigen affinity Purification
Size: 150ul , Concentration: 600 ug/ml by Nanodrop;	GeneID (NCBI): 84464	Recommended Dilutions: WB: 1:500-1:2000
Source: Rabbit	UNIPROT ID: Q8IY92	
Isotype: IgG	Full Name: BTB (POZ) domain containing 12	
Immunogen Catalog Number: AG36095	Calculated MW: 1834 aa, 200 kDa	
	Observed MW: 180-200 kDa	

Applications

Tested Applications: WB, ELISA	Positive Controls: WB : DU 145 cells, HeLa cells, mouse testis tissue, rat testis tissue
Species Specificity: human, mouse, rat	

Background Information

SLX4 (Structure-specific endonuclease subunit SLX4) is a scaffold protein that assembles multiple structure-specific nucleases, including SLX1, MUS81-EME1, and XPF-ERCC1. These nucleases are essential for resolving complex DNA structures that arise during DNA replication, repair, and recombination (PMID: 34804132). SLX4 is a key protein involved in DNA repair and genome stability, with significant implications for genetic disorders and cancer.

Storage

Storage:
Store at -20°C. Stable for one year after shipment.
Storage Buffer:
PBS with 0.02% sodium azide and 50% glycerol, pH7.3
Aliquoting is unnecessary for -20°C storage

*** 20ul sizes contain 0.1% BSA

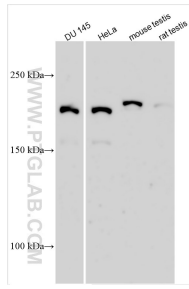
For technical support and original validation data for this product please contact:

T: 1 (888) 4PTGLAB (1-888-478-4522) (toll free in USA), or 1(312) 455-8498 (outside USA)

E: proteintech@ptglab.com
W: ptglab.com

This product is exclusively available under Proteintech Group brand and is not available to purchase from any other manufacturer.

Selected Validation Data



Various lysates were subjected to SDS PAGE followed by western blot with 31867-1-AP (SLX4 antibody) at dilution of 1:1000 incubated at room temperature for 1.5 hours.