

For Research Use Only

SLX4 Polyclonal antibody, PBS Only

Catalog Number: 31867-1-PBS



Basic Information

Catalog Number:

31867-1-PBS

Size:

100ug , Concentration: 1 mg/ml by Nanodrop;

Source:

Rabbit

Isotype:

IgG

Immunogen Catalog Number:

AG36095

GenBank Accession Number:

BC036335

GeneID (NCBI):

84464

UNIPROT ID:

Q8IY92

Full Name:

BTB (POZ) domain containing 12

Calculated MW:

1834 aa, 200 kDa

Observed MW:

180-200 kDa

Purification Method:

Antigen affinity Purification

Applications

Tested Applications:

WB, Indirect ELISA

Species Specificity:

human, mouse, rat

Background Information

SLX4 (Structure-specific endonuclease subunit SLX4) is a scaffold protein that assembles multiple structure-specific nucleases, including SLX1, MUS81-EME1, and XPF-ERCC1. These nucleases are essential for resolving complex DNA structures that arise during DNA replication, repair, and recombination (PMID: 34804132). SLX4 is a key protein involved in DNA repair and genome stability, with significant implications for genetic disorders and cancer.

Storage

Storage:

Store at -80°C.

Storage Buffer:

PBS Only

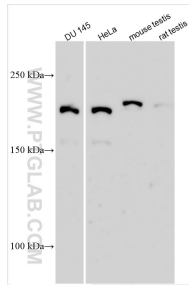
For technical support and original validation data for this product please contact:

T: 1 (888) 4PTGLAB (1-888-478-4522) (toll free in USA), or 1(312) 455-8498 (outside USA)

E: proteintech@ptglab.com
W: ptglab.com

This product is exclusively available under Proteintech Group brand and is not available to purchase from any other manufacturer.

Selected Validation Data



Various lysates were subjected to SDS PAGE followed by western blot with 31867-1-AP (SLX4 antibody) at dilution of 1:1000 incubated at room temperature for 1.5 hours. This data was developed using the same antibody clone with 31867-1-PBS in a different storage buffer formulation.