

For Research Use Only

PABPC1L Polyclonal antibody

Catalog Number: 31907-1-AP



Basic Information

Catalog Number:

31907-1-AP

Size:

150ul , Concentration: 450 ug/ml by Nanodrop;

Source:

Rabbit

Isotype:

IgG

Immunogen Catalog Number:

AG36248

GenBank Accession Number:

NM_001124756

GeneID (NCBI):

80336

Full Name:

poly(A) binding protein, cytoplasmic 1-like

Calculated MW:

68 kDa

Observed MW:

70 kDa

Purification Method:

Antigen affinity Purification

Recommended Dilutions:

WB 1:500-1:2000

Applications

Tested Applications:

WB, ELISA

Species Specificity:

human, mouse, rat

Positive Controls:

WB : RAW 264.7 cells, mouse kidney tissue, mouse liver tissue, rat liver tissue, NIH/3T3 cells

Background Information

PAP1L, also known as PABPC1L, is a human gene that has been associated with various cellular processes, particularly in the context of reproduction and embryonic development. PABPC1L was markedly upregulated in RCC, and high PABPC1L expression correlated with unfavorable prognosis and resistance to ICB (PMID: 38382068).

Storage

Storage:

Store at -20°C. Stable for one year after shipment.

Storage Buffer:

PBS with 0.02% sodium azide and 50% glycerol pH 7.3.

Aliquoting is unnecessary for -20°C storage

*** 20ul sizes contain 0.1% BSA

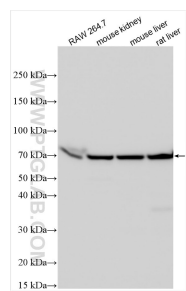
For technical support and original validation data for this product please contact:

T: 1 (888) 4PTGLAB (1-888-478-4522) (toll free in USA), or 1(312) 455-8498 (outside USA)

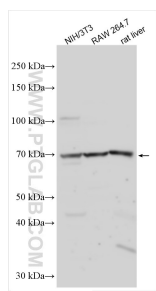
E: proteintech@ptglab.com
W: ptglab.com

This product is exclusively available under Proteintech Group brand and is not available to purchase from any other manufacturer.

Selected Validation Data



Various lysates were subjected to SDS PAGE followed by western blot with 31907-1-AP (PABPC1L antibody) at dilution of 1:3000 incubated at room temperature for 1.5 hours.



Various lysates were subjected to SDS PAGE followed by western blot with 31907-1-AP (PABPC1L antibody) at dilution of 1:1000 incubated at room temperature for 1.5 hours.