

For Research Use Only

# PABPC1L Polyclonal antibody, PBS Only

Catalog Number: 31907-1-PBS



## Basic Information

<b>Catalog Number:</b> 31907-1-PBS	<b>GenBank Accession Number:</b> NM_001124756	<b>Purification Method:</b> Antigen affinity Purification
<b>Size:</b> 100ug , Concentration: 1 mg/ml by Nanodrop;	<b>GeneID (NCBI):</b> 80336	
<b>Source:</b> Rabbit	<b>Full Name:</b> poly(A) binding protein, cytoplasmic 1-like	
<b>Isotype:</b> IgG	<b>Calculated MW:</b> 68 kDa	
<b>Immunogen Catalog Number:</b> AG36248	<b>Observed MW:</b> 70 kDa	

## Applications

**Tested Applications:**  
WB, Indirect ELISA

**Species Specificity:**  
human, mouse, rat

## Background Information

PAP1L, also known as PABPC1L, is a human gene that has been associated with various cellular processes, particularly in the context of reproduction and embryonic development. PABPC1L was markedly upregulated in RCC, and high PABPC1L expression correlated with unfavorable prognosis and resistance to ICB (PMID: 38382068).

## Storage

**Storage:**  
Store at -80°C.

**Storage Buffer:**  
PBS Only

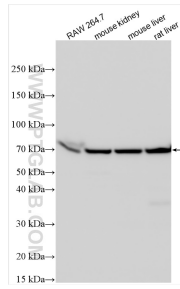
For technical support and original validation data for this product please contact:

T: 1 (888) 4PTGLAB (1-888-478-4522) (toll free in USA), or 1(312) 455-8498 (outside USA)

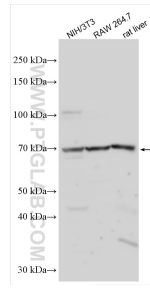
E: [proteintech@ptglab.com](mailto:proteintech@ptglab.com)  
W: [ptglab.com](http://ptglab.com)

**This product is exclusively available under Proteintech Group brand and is not available to purchase from any other manufacturer.**

## Selected Validation Data



Various lysates were subjected to SDS PAGE followed by western blot with 31907-1-AP (PABPC1L antibody) at dilution of 1:3000 incubated at room temperature for 1.5 hours. This data was developed using the same antibody clone with 31907-1-PBS in a different storage buffer formulation.



Various lysates were subjected to SDS PAGE followed by western blot with 31907-1-AP (PABPC1L antibody) at dilution of 1:1000 incubated at room temperature for 1.5 hours. This data was developed using the same antibody clone with 31907-1-PBS in a different storage buffer formulation.