

For Research Use Only

FRMD1 Polyclonal antibody, PBS Only

Catalog Number: 31908-1-PBS

Featured Product



Basic Information

Catalog Number:

31908-1-PBS

Size:

100ug, Concentration: 1 mg/ml by Nanodrop;

Source:

Rabbit

Isotype:

IgG

Immunogen Catalog Number:

AG36382

GenBank Accession Number:

BC137144

GeneID (NCBI):

79981

UNIPROT ID:

Q8N878

Full Name:

FERM domain containing 1

Observed MW:

70 kDa

Purification Method:

Antigen affinity Purification

Applications

Tested Applications:

WB, Indirect ELISA

Species Specificity:

human, mouse, rat

Background Information

The FERM structural domain of FRMD1 (FERM Domain Containing 1) is widely found in cytoskeleton-associated proteins, which are capable of connecting the cytoskeleton to the cell membrane and is involved in signaling. FRMD1 is predicted to be involved in the positive regulation of the Hippo signaling pathway and may play a role in the cytoplasmic side of the cytoskeleton and apical plasma membrane. Although there are fewer studies on the role of FRMD1 in disease, its expression pattern in cancer and lymphoid tissues suggests that it may have important biological functions.

Storage

Storage:

Store at -80°C.

Storage Buffer:

PBS Only

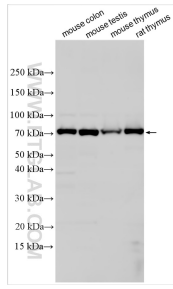
For technical support and original validation data for this product please contact:

T: 1 (888) 4PTGLAB (1-888-478-4522) (toll free in USA), or 1(312) 455-8498 (outside USA)

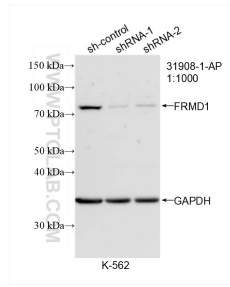
E: proteintech@ptglab.com
W: ptglab.com

This product is exclusively available under Proteintech Group brand and is not available to purchase from any other manufacturer.

Selected Validation Data



Various lysates were subjected to SDS PAGE followed by western blot with 31908-1-AP (FRMD1 antibody) at dilution of 1:2000 incubated at room temperature for 1.5 hours. This data was developed using the same antibody clone with 31908-1-PBS in a different storage buffer formulation.



WB result of FRMD1 antibody (31908-1-AP; 1:1000; incubated at room temperature for 1.5 hours) with sh-Control and sh-FRMD1 transfected K-562 cells. This data was developed using the same antibody clone with 31908-1-PBS in a different storage buffer formulation.