

For Research Use Only

# FAM222A Polyclonal antibody

Catalog Number: 31914-1-AP



## Basic Information

### Catalog Number:

31914-1-AP

### Size:

150ul , Concentration: 450 ug/ml by Nanodrop;

### Source:

Rabbit

### Isotype:

IgG

### Immunogen Catalog Number:

AG36045

### GenBank Accession Number:

BC037221

### GeneID (NCBI):

84915

### UNIPROT ID:

Q5U5X8

### Full Name:

chromosome 12 open reading frame 34

### Calculated MW:

47 kDa

### Observed MW:

70 kDa

### Purification Method:

Antigen affinity Purification

### Recommended Dilutions:

WB 1:1000-1:4000

## Applications

### Tested Applications:

WB, ELISA

### Species Specificity:

human

### Positive Controls:

WB : COLO 320 cells, HepG2 cells, HuH-7 cells, MDA-MB-453 cells, SH-SY5Y cells, TT cells, U2OS cells

## Background Information

Family with sequence similarity 222 member A (FAM222A, also known as C12orf34) is associated with the progress of Alzheimer's disease (PMID: 31964863; 37092222). It is also a novel key determinant of endothelial biology and angiogenesis (PMID: 37942611).

## Storage

### Storage:

Store at -20°C. Stable for one year after shipment.

### Storage Buffer:

PBS with 0.02% sodium azide and 50% glycerol pH 7.3.

Aliquoting is unnecessary for -20°C storage

\*\*\* 20ul sizes contain 0.1% BSA

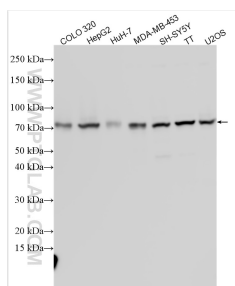
For technical support and original validation data for this product please contact:

T: 1 (888) 4PTGLAB (1-888-478-4522) (toll free in USA), or 1(312) 455-8498 (outside USA)

E: [proteintech@ptglab.com](mailto:proteintech@ptglab.com)  
W: [ptglab.com](http://ptglab.com)

This product is exclusively available under Proteintech Group brand and is not available to purchase from any other manufacturer.

## Selected Validation Data



Various lysates were subjected to SDS PAGE followed by western blot with 31914-1-AP (FAM222A antibody) at dilution of 1:2000 incubated at room temperature for 1.5 hours.