

For Research Use Only

SASH3 Polyclonal antibody

Catalog Number: 31915-1-AP

Featured Product



Basic Information

Catalog Number:

31915-1-AP

Size:

150ul , Concentration: 500 ug/ml by Nanodrop;

Source:

Rabbit

Isotype:

IgG

Immunogen Catalog Number:

AG36154

GenBank Accession Number:

BC051881

GeneID (NCBI):

54440

UNIPROT ID:

O75995

Full Name:

SAM and SH3 domain containing 3

Calculated MW:

380 aa, 42 kDa

Observed MW:

60 kDa

Purification Method:

Antigen affinity Purification

Recommended Dilutions:

WB: 1:500-1:2000

Applications

Tested Applications:

WB, ELISA

Species Specificity:

human

Positive Controls:

WB : THP-1 cells, Jurkat cells

Background Information

Sterile alpha motif (SAM) and Src homology-3 (SH3) domain-containing 3 (SASH3), also called SH3-containing lymphocyte protein (SLY1), is a putative adaptor protein that is postulated to play an important role in the organization of signaling complexes and propagation of signal transduction cascades in lymphocytes. The SASH3 gene is located on the X-chromosome, which plays an important role in human lymphocyte function and survival (PMID: 33876203).

Storage

Storage:

Store at -20°C. Stable for one year after shipment.

Storage Buffer:

PBS with 0.02% sodium azide and 50% glycerol, pH7.3

Aliquoting is unnecessary for -20°C storage

*** 20ul sizes contain 0.1% BSA

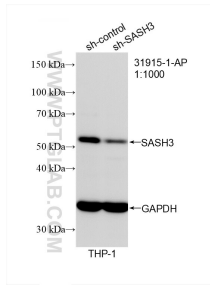
For technical support and original validation data for this product please contact:

T: 1 (888) 4PTGLAB (1-888-478-4522) (toll free in USA), or 1(312) 455-8498 (outside USA)

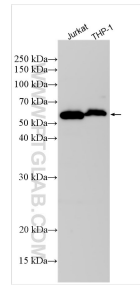
E: proteintech@ptglab.com
W: ptglab.com

This product is exclusively available under Proteintech Group brand and is not available to purchase from any other manufacturer.

Selected Validation Data



WB result of SASH3 antibody (31915-1-AP; 1:1000; incubated at room temperature for 1.5 hours) with sh-Control and sh-SASH3 transfected THP-1 cells.



Various lysates were subjected to SDS PAGE followed by western blot with 31915-1-AP (SASH3 antibody) at dilution of 1:2000 incubated at room temperature for 1.5 hours.