

For Research Use Only

# HDGFL1 Polyclonal antibody, PBS Only

Catalog Number: 31923-1-PBS



## Basic Information

Catalog Number:

31923-1-PBS

Size:

100ug, Concentration: 1 mg/ml by Nanodrop;

Source:

Rabbit

Isotype:

IgG

Immunogen Catalog Number:

AG36944

GenBank Accession Number:

NM\_138574

GeneID (NCBI):

154150

UNIPROT ID:

Q5TGJ6

Full Name:

hepatoma derived growth factor-like

1

Calculated MW:

27 kDa

Observed MW:

40 kDa

Purification Method:

Antigen affinity Purification

## Applications

Tested Applications:

WB, Indirect ELISA

Species Specificity:

human

## Background Information

Hepatoma-derived growth factor-like 1 (HDGFL1, also known as HRP-1, PWWP1, and Hdgfrp1) is a member of the hepatoma-derived growth factor (HDGF) family related to tumorigenesis and the development of cancer (PMID: 18823380; 20509080). It is specifically expressed in the testis and activated in the nucleus (PMID: 22217008).

## Storage

Storage:

Store at -80°C.

Storage Buffer:

PBS only

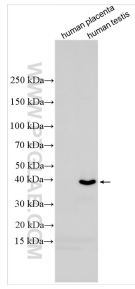
For technical support and original validation data for this product please contact:

T: 1 (888) 4PTGLAB (1-888-478-4522) (toll free in USA), or 1(312) 455-8498 (outside USA)

E: [proteintech@ptglab.com](mailto:proteintech@ptglab.com)  
W: [ptglab.com](http://ptglab.com)

This product is exclusively available under Proteintech Group brand and is not available to purchase from any other manufacturer.

## Selected Validation Data



Various lysates were subjected to SDS PAGE followed by western blot with 31923-1-AP (HDGFL1 antibody) at dilution of 1:3000 incubated at room temperature for 1.5 hours. This data was developed using the same antibody clone with 31923-1-PBS in a different storage buffer formulation.