

For Research Use Only

# CLEC2L Polyclonal antibody

Catalog Number: 31928-1-AP



## Basic Information

<b>Catalog Number:</b> 31928-1-AP	<b>GenBank Accession Number:</b> NM_001080511.2	<b>Purification Method:</b> Antigen affinity Purification
<b>Size:</b> 150ul , Concentration: 400 ug/ml by Nanodrop;	<b>GeneID (NCBI):</b> 154790	<b>Recommended Dilutions:</b> WB 1:500-1:3000 IHC 1:50-1:500
<b>Source:</b> Rabbit	<b>UNIPROT ID:</b> POC7M8	
<b>Isotype:</b> IgG	<b>Full Name:</b> C-type lectin domain family 2, member L	
<b>Immunogen Catalog Number:</b> AG35450	<b>Calculated MW:</b> 24 kDa	
	<b>Observed MW:</b> 38 kDa	

## Applications

<b>Tested Applications:</b> WB, IHC, ELISA	<b>Positive Controls:</b>
<b>Species Specificity:</b> mouse, rat	<b>WB :</b> mouse skeletal muscle tissue, rat skeletal muscle tissue
<b>Note-IHC:</b> suggested antigen retrieval with <b>TE buffer pH 9.0; (*) Alternatively, antigen retrieval may be performed with citrate buffer pH 6.0</b>	<b>IHC :</b> mouse cerebellum tissue, mouse skeletal muscle tissue

## Background Information

C-type lectin domain family 2 member L (CLEC2L) is a membrane protein mainly expressed in brain tissue and probably has carbohydrate-binding activity. The CLEC2L-encoded C-type lectin-like receptors (CTLRs) are expressed as non-glycosylated, disulfide-linked homodimers at the cell surface, and designated as BACL (brain-associated C-type lectin) (PMID: 23776472). The CLEC2L protein has 214 amino acids with a predicted molecular mass of 23.9 kDa. Under non-reducing conditions, FLAG-tagged CLEC2L proteins appeared with a molecular mass of ~55 kDa in immunoblots because of the occurrence of disulfide-linked homodimers (PMID: 23776472).

## Storage

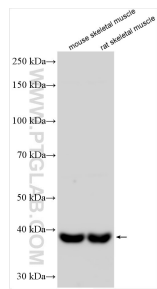
**Storage:**  
Store at -20°C. Stable for one year after shipment.  
**Storage Buffer:**  
PBS with 0.02% sodium azide and 50% glycerol pH 7.3.  
**Aliquoting is unnecessary for -20°C storage**

\*\*\* 20ul sizes contain 0.1% BSA

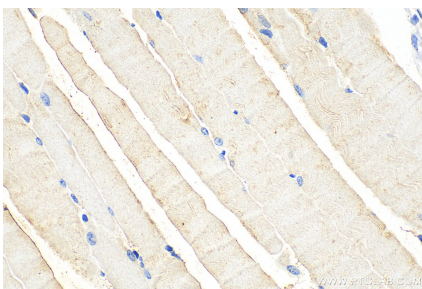
For technical support and original validation data for this product please contact:  
T: 1 (888) 4PTGLAB (1-888-478-4522) (toll free in USA), or 1(312) 455-8498 (outside USA)  
E: [proteintech@ptglab.com](mailto:proteintech@ptglab.com)  
W: [ptglab.com](http://ptglab.com)

This product is exclusively available under Proteintech Group brand and is not available to purchase from any other manufacturer.

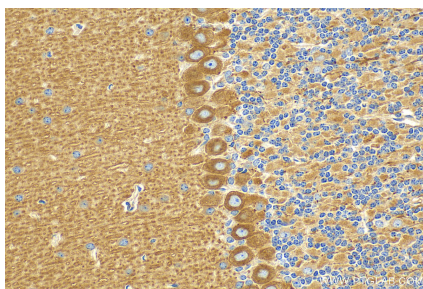
## Selected Validation Data



Various lysates were subjected to SDS PAGE followed by western blot with 31928-1-AP (CLEC2L antibody) at dilution of 1:1500 incubated at room temperature for 1.5 hours.



Immunohistochemical analysis of paraffin-embedded mouse skeletal muscle tissue slide using 31928-1-AP (CLEC2L antibody) at dilution of 1:200 (under 40x lens). Heat mediated antigen retrieval with Tris-EDTA buffer (pH 9.0).



Immunohistochemical analysis of paraffin-embedded mouse cerebellum tissue slide using 31928-1-AP (CLEC2L antibody) at dilution of 1:200 (under 40x lens). Heat mediated antigen retrieval with Tris-EDTA buffer (pH 9.0).