

For Research Use Only

KIR2DL2 Polyclonal antibody

Catalog Number: 31930-1-AP



Basic Information

Catalog Number:

31930-1-AP

Size:

150ul , Concentration: 500 ug/ml by Nanodrop;

Source:

Rabbit

Isotype:

IgG

Immunogen Catalog Number:

AG35284

GenBank Accession Number:

NM_014219

GeneID (NCBI):

3803

UNIPROT ID:

P43627

Full Name:

killer cell immunoglobulin-like receptor, two domains, long cytoplasmic tail, 2

Calculated MW:

38 kDa

Observed MW:

60,30 kDa

Purification Method:

Antigen affinity Purification

Recommended Dilutions:

WB 1:500-1:2000

Applications

Tested Applications:

WB, ELISA

Species Specificity:

human

Positive Controls:

WB : HuT 78 cells,

Background Information

KIR2DL2 is one of killer cell immunoglobulin-like receptors, which are transmembrane glycoproteins expressed by natural killer cells and subsets of T cells. KIR proteins with the long cytoplasmic domain transduce inhibitory signals upon ligand binding via an immune tyrosine-based inhibitory motif (ITIM), while KIR proteins with the short cytoplasmic domain lack the ITIM motif and instead associate with the TYRO protein tyrosine kinase binding protein to transduce activating signals. The ligands for several KIR proteins are subsets of HLA class I molecules; thus, KIR proteins are thought to play an important role in regulation of the immune response.

Storage

Storage:

Store at -20°C. Stable for one year after shipment.

Storage Buffer:

PBS with 0.02% sodium azide and 50% glycerol pH 7.3.

Aliquoting is unnecessary for -20°C storage

*** 20ul sizes contain 0.1% BSA

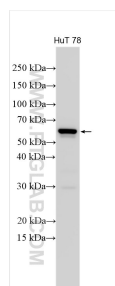
For technical support and original validation data for this product please contact:

T: 1 (888) 4PTGLAB (1-888-478-4522) (toll free in USA), or 1(312) 455-8498 (outside USA)

E: proteintech@ptglab.com
W: ptglab.com

This product is exclusively available under Proteintech Group brand and is not available to purchase from any other manufacturer.

Selected Validation Data



Various lysates were subjected to SDS PAGE followed by western blot with 31930-1-AP (KIR2DL2 antibody) at dilution of 1:1000 incubated at room temperature for 1.5 hours.