

For Research Use Only

# SPINT3 Polyclonal antibody

Catalog Number: 31931-1-AP



## Basic Information

**Catalog Number:**

31931-1-AP

**Size:**

150ul , Concentration: 450 ug/ml by Nanodrop;

**Source:**

Rabbit

**Isotype:**

IgG

**Immunogen Catalog Number:**

AG35289

**GenBank Accession Number:**

NM\_006652.1

**GeneID (NCBI):**

10816

**UNIPROT ID:**

P49223

**Full Name:**

serine peptidase inhibitor, Kunitz type, 3

**Calculated MW:**

10 kDa

**Observed MW:**

35 kDa

**Purification Method:**

Antigen affinity Purification

**Recommended Dilutions:**

WB 1:1000-1:6000

IF/ICC 1:200-1:800

## Applications

**Tested Applications:**

WB, IF/ICC, ELISA

**Species Specificity:**

human, mouse, rat

**Positive Controls:**

WB : A431 cells, mouse testis tissue, A549 cells, mouse epididymis tissue, rat testis tissue

IF/ICC : A431 cells,

## Background Information

Serine peptidase inhibitor, Kunitz type 3 (SPINT3, also known as HKIB9) might be related to serine-type endopeptidase inhibitor activity, receptor antagonist activity, and transforming growth factor beta binding (PMID: 21988899). The calculated molecular weight of SPINT3 is 10 kDa, which is lower than its observed molecular weight of 30-35 kDa by SDS-PAGE detection (PMID: 21988899).

## Storage

**Storage:**

Store at -20°C. Stable for one year after shipment.

**Storage Buffer:**

PBS with 0.02% sodium azide and 50% glycerol

Aliquoting is unnecessary for -20°C storage

\*\*\* 20ul sizes contain 0.1% BSA

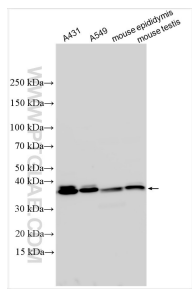
For technical support and original validation data for this product please contact:

T: 1 (888) 4PTGLAB (1-888-478-4522) (toll free in USA), or 1(312) 455-8498 (outside USA)

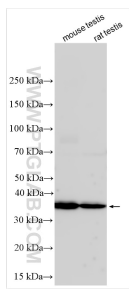
E: [proteintech@ptglab.com](mailto:proteintech@ptglab.com)  
W: [ptglab.com](http://ptglab.com)

This product is exclusively available under Proteintech Group brand and is not available to purchase from any other manufacturer.

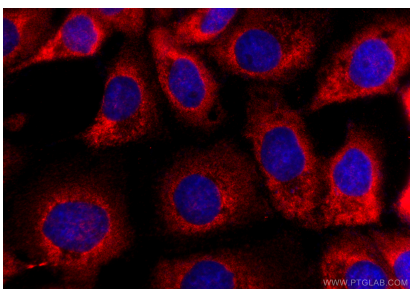
## Selected Validation Data



Various lysates were subjected to SDS PAGE followed by western blot with 31931-1-AP (SPINT3 antibody) at dilution of 1:3000 incubated at room temperature for 1.5 hours.



Various lysates were subjected to SDS PAGE followed by western blot with 31931-1-AP (SPINT3 antibody) at dilution of 1:3000 incubated at room temperature for 1.5 hours.



Immunofluorescent analysis of (-20°C Methanol) fixed A431 cells using SPINT3 antibody (31931-1-AP) at dilution of 1:400 and CoraLite®594-Conjugated Goat Anti-Rabbit IgG(H+L) (SA00013-4).