

For Research Use Only

PAPLN Polyclonal antibody

Catalog Number: 31937-1-AP



Basic Information

Catalog Number: 31937-1-AP	GenBank Accession Number: BC136623	Purification Method: Antigen affinity Purification
Size: 150ul , Concentration: 270 ug/ml by Nanodrop;	GeneID (NCBI): 89932	Recommended Dilutions: WB: 1:500-1:2000
Source: Rabbit	UNIPROT ID: O95428	
Isotype: IgG	Full Name: papilin, proteoglycan-like sulfated glycoprotein	
Immunogen Catalog Number: AG36224	Calculated MW: 137 kDa / 119 kDa	
	Observed MW: 120 kDa	

Applications

Tested Applications: WB, ELISA	Positive Controls: WB : Daudi cells, Raji cells, Ramos cells
Species Specificity: human	

Background Information

PAPLN (papilin, proteoglycan like sulfated glycoprotein) is a protein-coding gene located on human chromosome 14q24.2 that encodes a secreted glycoprotein belonging to the papilin family . Predicted to function as a serine-type endopeptidase inhibitor, PAPLN contains multiple conserved domains including thrombospondin type 1 repeats, Kunitz/BPTI domains, and immunoglobulin-like domains, which are characteristic of protease inhibitors involved in extracellular matrix organization . The protein is primarily localized to the basement membrane and plays a role in extracellular matrix organization and nervous system development . PAPLN is broadly expressed across human tissues, with highest expression levels observed in the spleen and kidney . Emerging research suggests its involvement in pelvic organ prolapse etiopathogenesis, highlighting its potential significance in connective tissue integrity .

Storage

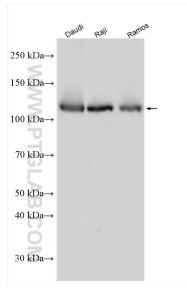
Storage:
Store at -20°C. Stable for one year after shipment.
Storage Buffer:
PBS with 0.02% sodium azide and 50% glycerol, pH7.3
Aliquoting is unnecessary for -20°C storage

*** 20ul sizes contain 0.1% BSA

For technical support and original validation data for this product please contact:
T: 1 (888) 4PTGLAB (1-888-478-4522) (toll free in USA), or 1(312) 455-8498 (outside USA)
E: proteintech@ptglab.com
W: ptglab.com

This product is exclusively available under Proteintech Group brand and is not available to purchase from any other manufacturer.

Selected Validation Data



Various lysates were subjected to SDS PAGE followed by western blot with 31937-1-AP (PAPLN antibody) at dilution of 1:1000 incubated at room temperature for 1.5 hours.