

For Research Use Only

PAPLN Polyclonal antibody, PBS Only

Catalog Number: 31937-1-PBS



Basic Information

Catalog Number:

31937-1-PBS

Size:

100ug, Concentration: 1 mg/ml by Nanodrop;

Source:

Rabbit

Isotype:

IgG

Immunogen Catalog Number:

AG36224

GenBank Accession Number:

BC136623

GeneID (NCBI):

89932

UNIPROT ID:

O95428

Full Name:

papilin, proteoglycan-like sulfated glycoprotein

Calculated MW:

137 kDa / 119 kDa

Observed MW:

120 kDa

Purification Method:

Antigen affinity Purification

Applications

Tested Applications:

WB, Indirect ELISA

Species Specificity:

human

Background Information

PAPLN (papilin, proteoglycan like sulfated glycoprotein) is a protein-coding gene located on human chromosome 14q24.2 that encodes a secreted glycoprotein belonging to the papilin family. Predicted to function as a serine-type endopeptidase inhibitor, PAPLN contains multiple conserved domains including thrombospondin type 1 repeats, Kunitz/BPTI domains, and immunoglobulin-like domains, which are characteristic of protease inhibitors involved in extracellular matrix organization. The protein is primarily localized to the basement membrane and plays a role in extracellular matrix organization and nervous system development. PAPLN is broadly expressed across human tissues, with highest expression levels observed in the spleen and kidney. Emerging research suggests its involvement in pelvic organ prolapse etiopathogenesis, highlighting its potential significance in connective tissue integrity.

Storage

Storage:

Store at -80°C.

Storage Buffer:

PBS only, pH7.3

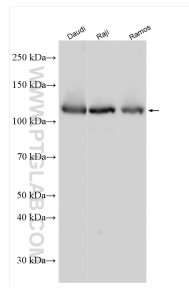
For technical support and original validation data for this product please contact:

T: 1 (888) 4PTGLAB (1-888-478-4522) (toll free in USA), or 1(312) 455-8498 (outside USA)

E: proteintech@ptglab.com
W: ptglab.com

This product is exclusively available under Proteintech Group brand and is not available to purchase from any other manufacturer.

Selected Validation Data



Various lysates were subjected to SDS PAGE followed by western blot with 31937-1-AP (PAPLN antibody) at dilution of 1:1000 incubated at room temperature for 1.5 hours. This data was developed using the same antibody clone with 31937-1-PBS in a different storage buffer formulation.