

For Research Use Only

CPN1 Polyclonal antibody

Catalog Number: 31940-1-AP



Basic Information

Catalog Number: 31940-1-AP	GenBank Accession Number: BC027897	Purification Method: Antigen affinity Purification
Size: 150ul , Concentration: 550 ug/ml by Nanodrop;	GeneID (NCBI): 1369	Recommended Dilutions: WB 1:1000-1:6000
Source: Rabbit	UNIPROT ID: P15169	
Isotype: IgG	Full Name: carboxypeptidase N, polypeptide 1	
Immunogen Catalog Number: AG34806	Calculated MW: 458 aa, 52 kDa	
	Observed MW: 40-50 kDa	

Applications

Tested Applications: WB, ELISA	Positive Controls: WB : human plasma,
Species Specificity: human	

Background Information

Human carboxypeptidase N (CPN), a member of the CPN/E subfamily of "regulatory" metallo-carboxypeptidases, is an extracellular glycoprotein synthesized in the liver and secreted into the blood, where it controls the activity of vasoactive peptide hormones, growth factors and cytokines by specifically removing C-terminal basic residues. Normally, CPN circulates in blood plasma as a hetero-tetramer consisting of two 83 kDa (CPN2) domains each flanked by a 48 to 55 kDa catalytic (CPN1) domain. The C terminal region of the CPN1 subunit differs from all other family members in that it contains numerous basic residues. Proteolysis at these sites apparently happens either constitutively in the blood or during processing and secretion from the liver.

Storage

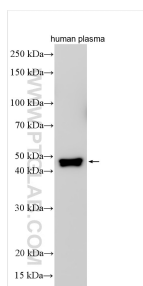
Storage:
Store at -20°C. Stable for one year after shipment.
Storage Buffer:
PBS with 0.02% sodium azide and 50% glycerol pH 7.3.
Aliquoting is unnecessary for -20°C storage

*** 20ul sizes contain 0.1% BSA

For technical support and original validation data for this product please contact:
T: 1 (888) 4PTGLAB (1-888-478-4522) (toll free in USA), or 1(312) 455-8498 (outside USA)
E: proteintech@ptglab.com
W: ptglab.com

This product is exclusively available under Proteintech Group brand and is not available to purchase from any other manufacturer.

Selected Validation Data



Various lysates were subjected to SDS PAGE followed by western blot with 31940-1-AP (CPN1 antibody) at dilution of 1:3000 incubated at room temperature for 1.5 hours.