

For Research Use Only

# GSDMD Polyclonal antibody

Catalog Number: 31942-1-AP



## Basic Information

### Catalog Number:

31942-1-AP

### Size:

150ul , Concentration: 550 ug/ml by Nanodrop;

### Source:

Rabbit

### Isotype:

IgG

### Immunogen Catalog Number:

AG36922

### GenBank Accession Number:

NM\_026960.4

### GeneID (NCBI):

69146

### UNIPROT ID:

Q9D8T2

### Full Name:

gasdermin D

### Calculated MW:

53kDa 487aa

### Observed MW:

50-53 kDa

### Purification Method:

Antigen affinity Purification

### Recommended Dilutions:

WB 1:500-1:2000

## Applications

### Tested Applications:

WB, ELISA

### Species Specificity:

mouse

### Positive Controls:

WB : EL-4 cells, J774A.1 cells, NIH/3T3 cells, RAW 264.7 cells

## Background Information

GSDMD is a member of the gasdermin family. Members of this family appear to play a role in regulation of epithelial proliferation. GSDMD has been suggested to act as a tumor suppressor. Recently, GSDMD is identified as a new component of inflammasomes, and it is an executor of pyroptosis and required for interleukin-1 $\beta$  secretion. Cleavage of GSDMD by inflammatory caspases determines pyroptotic cell death.

## Storage

### Storage:

Store at -20°C. Stable for one year after shipment.

### Storage Buffer:

PBS with 0.02% sodium azide and 50% glycerol pH 7.3.

Aliquoting is unnecessary for -20°C storage

\*\*\* 20ul sizes contain 0.1% BSA

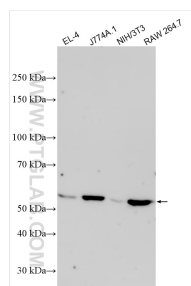
For technical support and original validation data for this product please contact:

T: 1 (888) 4PTGLAB (1-888-478-4522) (toll free in USA), or 1(312) 455-8498 (outside USA)

E: [proteintech@ptglab.com](mailto:proteintech@ptglab.com)  
W: [ptglab.com](http://ptglab.com)

This product is exclusively available under Proteintech Group brand and is not available to purchase from any other manufacturer.

## Selected Validation Data



Various lysates were subjected to SDS PAGE followed by western blot with 31942-1-AP (Gsdmd antibody) at dilution of 1:1000 incubated at room temperature for 1.5 hours.