

For Research Use Only

# CD2 Polyclonal antibody

Catalog Number: 31947-1-AP



## Basic Information

### Catalog Number:

31947-1-AP

### Size:

150ul , Concentration: 550 ug/ml by Nanodrop;

### Source:

Rabbit

### Isotype:

IgG

### GenBank Accession Number:

NM\_013486.2

### GeneID (NCBI):

12481

### UNIPROT ID:

P08920

### Full Name:

CD2 antigen

### Calculated MW:

38 kDa

### Observed MW:

60 kDa

### Purification Method:

Antigen affinity Purification

### Recommended Dilutions:

WB 1:2000-1:12000

## Applications

### Tested Applications:

WB, ELISA

### Species Specificity:

mouse, rat

### Positive Controls:

WB : CTLL-2 cells, mouse spleen tissue, mouse thymus tissue, rat spleen tissue, rat thymus tissue

## Background Information

CD2 is a cell surface glycoprotein present on a majority of thymocytes, all mature T cells and subset of NK cells but not on B lymphocytes. It is a pan T-cell marker. CD2 interacts with lymphocyte function-associated antigen (LFA-3/CD58) and CD48/BCM1 to mediate adhesion between T-cells and other cell types. CD2 is implicated in the triggering of T-cells, the cytoplasmic domain is implicated in the signaling function.

## Storage

### Storage:

Store at -20°C. Stable for one year after shipment.

### Storage Buffer:

PBS with 0.02% sodium azide and 50% glycerol pH 7.3.

Aliquoting is unnecessary for -20°C storage

**\*\*\* 20ul sizes contain 0.1% BSA**

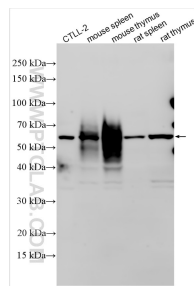
For technical support and original validation data for this product please contact:

T: 1 (888) 4PTGLAB (1-888-478-4522) (toll free in USA), or 1(312) 455-8498 (outside USA)

E: [proteintech@ptglab.com](mailto:proteintech@ptglab.com)  
W: [ptglab.com](http://ptglab.com)

This product is exclusively available under Proteintech Group brand and is not available to purchase from any other manufacturer.

## Selected Validation Data



Various lysates were subjected to SDS PAGE followed by western blot with 31947-1-AP (CD2 antibody) at dilution of 1:6000 incubated at room temperature for 1.5 hours.