

For Research Use Only

SHB Polyclonal antibody, PBS Only

Catalog Number: 31967-1-PBS



Basic Information

| | | |
|--|---|--|
| Catalog Number: 31967-1-PBS | GenBank Accession Number: BC136581 | Purification Method: Antigen affinity Purification |
| Size: 100ug, Concentration: 1 mg/ml by Nanodrop; | GeneID (NCBI): 6461 | |
| Source: Rabbit | UNIPROT ID: Q15464 | |
| Isotype: IgG | Full Name: Src homology 2 domain containing adaptor protein B | |
| Immunogen Catalog Number: AG35936 | Calculated MW: 55 kDa | |
| | Observed MW: 55 kDa | |

Applications

Tested Applications:
WB, Indirect ELISA

Species Specificity:
human, mouse, rat

Background Information

SH2 domain-containing adapter protein B (SHB) is an adaptor protein that operates downstream of tyrosine kinases. It is crucial in various cellular responses, including cell survival, differentiation, and proliferation (PMID: 29792386). SHB is involved in the modulation of focal adhesion kinase (FAK) signaling, which is important for regulating cell cycle progression in hematopoietic stem cells (PMID: 23528453). The protein has also been implicated in the progression of myeloproliferative disorders by affecting the activity of FAK and other signaling intermediates (PMID: 24952416).

Storage

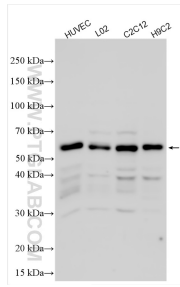
Storage:
Store at -80°C.

Storage Buffer:
PBS Only

For technical support and original validation data for this product please contact:
T: 1 (888) 4PTGLAB (1-888-478-4522) (toll free in USA), or 1(312) 455-8498 (outside USA) E: proteintech@ptglab.com
W: ptglab.com

This product is exclusively available under Proteintech Group brand and is not available to purchase from any other manufacturer.

Selected Validation Data



Various lysates were subjected to SDS PAGE followed by western blot with 31967-1-AP (SHB antibody) at dilution of 1:5000 incubated at room temperature for 1.5 hours. This data was developed using the same antibody clone with 31967-1-PBS in a different storage buffer formulation.