

For Research Use Only

# TEF Polyclonal antibody

Catalog Number: 31975-1-AP



## Basic Information

<b>Catalog Number:</b> 31975-1-AP	<b>GenBank Accession Number:</b> BC039258	<b>Purification Method:</b> Antigen affinity Purification
<b>Size:</b> 150ul , Concentration: 410 ug/ml by Nanodrop;	<b>GeneID (NCBI):</b> 7008	<b>Recommended Dilutions:</b> WB: 1:1000-1:8000
<b>Source:</b> Rabbit	<b>UNIPROT ID:</b> Q10587	
<b>Isotype:</b> IgG	<b>Full Name:</b> thyrotrophic embryonic factor	
<b>Immunogen Catalog Number:</b> AG37096	<b>Observed MW:</b> 28 kDa	

## Applications

<b>Tested Applications:</b> WB, ELISA	<b>Positive Controls:</b> WB : A549 cells, Calu-1 cells, K-562 cells
<b>Species Specificity:</b> human	

## Background Information

TEF (Thyrotroph Embryonic Factor) is a member of the PAR bZIP transcription factor family. Initially identified as being specifically expressed in pituitary thyrotroph cells during embryonic development, it regulates the transcription of the thyroid-stimulating hormone (TSH- $\beta$ ) gene. TEF activates target genes by binding to specific DNA sequences and is involved in cell cycle regulation, proliferation, and differentiation. Recent studies have revealed that TEF is significantly downregulated in various cancers, including bladder cancer, where it functions as a tumor suppressor by inhibiting tumor cell proliferation and metastasis through the AKT/FOXOs and Hippo signaling pathways, making it a potential tumor biomarker. In addition, as a regulator of circadian rhythms, polymorphisms in the TEF gene are associated with neuropsychiatric disorders such as Parkinson's disease, depression, and sleep disorders.

## Storage

**Storage:**  
Store at -20°C. Stable for one year after shipment.  
**Storage Buffer:**  
PBS with 0.02% sodium azide and 50% glycerol, pH7.3  
Aliquoting is unnecessary for -20°C storage

\*\*\* 20ul sizes contain 0.1% BSA

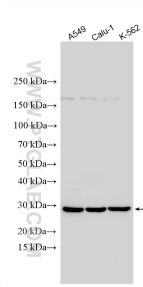
For technical support and original validation data for this product please contact:

T: 1 (888) 4PTGLAB (1-888-478-4522) (toll free in USA), or 1(312) 455-8498 (outside USA)

E: [proteintech@ptglab.com](mailto:proteintech@ptglab.com)  
W: [ptglab.com](http://ptglab.com)

This product is exclusively available under Proteintech Group brand and is not available to purchase from any other manufacturer.

## Selected Validation Data



Various lysates were subjected to SDS PAGE followed by western blot with 31975-1-AP (TEF antibody) at dilution of 1:4000 incubated at room temperature for 1.5 hours.