

For Research Use Only

TEF Polyclonal antibody, PBS Only

Catalog Number: 31975-1-PBS



Basic Information

Catalog Number:

31975-1-PBS

Size:

100ug, Concentration: 1 mg/ml by Nanodrop;

Source:

Rabbit

Isotype:

IgG

Immunogen Catalog Number:

AG37096

GenBank Accession Number:

BC039258

GeneID (NCBI):

7008

UNIPROT ID:

Q10587

Full Name:

thyrotrophic embryonic factor

Observed MW:

28 kDa

Purification Method:

Antigen affinity Purification

Applications

Tested Applications:

WB, Indirect ELISA

Species Specificity:

human

Background Information

TEF (Thyrotroph Embryonic Factor) is a member of the PAR bZIP transcription factor family. Initially identified as being specifically expressed in pituitary thyrotroph cells during embryonic development, it regulates the transcription of the thyroid-stimulating hormone (TSH- β) gene. TEF activates target genes by binding to specific DNA sequences and is involved in cell cycle regulation, proliferation, and differentiation. Recent studies have revealed that TEF is significantly downregulated in various cancers, including bladder cancer, where it functions as a tumor suppressor by inhibiting tumor cell proliferation and metastasis through the AKT/FOXOs and Hippo signaling pathways, making it a potential tumor biomarker. In addition, as a regulator of circadian rhythms, polymorphisms in the TEF gene are associated with neuropsychiatric disorders such as Parkinson's disease, depression, and sleep disorders.

Storage

Storage:

Store at -80°C.

Storage Buffer:

PBS only, pH7.3

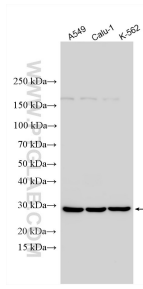
For technical support and original validation data for this product please contact:

T: 1 (888) 4PTGLAB (1-888-478-4522) (toll free in USA), or 1(312) 455-8498 (outside USA)

E: proteintech@ptglab.com
W: ptglab.com

This product is exclusively available under Proteintech Group brand and is not available to purchase from any other manufacturer.

Selected Validation Data



Various lysates were subjected to SDS PAGE followed by western blot with 31975-1-AP (TEF antibody) at dilution of 1:4000 incubated at room temperature for 1.5 hours. This data was developed using the same antibody clone with 31975-1-PBS in a different storage buffer formulation.