

For Research Use Only

# Mouse NKp46/NCR1 Polyclonal antibody, PBS Only

Catalog Number: 31984-1-PBS



## Basic Information

**Catalog Number:**  
31984-1-PBS

**Size:**  
100ug, Concentration: 1 mg/ml by  
Nanodrop;

**Source:**  
Rabbit

**Isotype:**  
IgG

**GenBank Accession Number:**  
NM\_010746.3

**GeneID (NCBI):**  
17086

**UNIPROT ID:**  
Q8C567

**Full Name:**  
natural cytotoxicity triggering  
receptor 1

**Calculated MW:**  
37kDa

**Purification Method:**

Antigen affinity Purification

## Applications

**Tested Applications:**  
IHC, Indirect ELISA

**Species Specificity:**  
mouse

## Background Information

NKp46, also known as NCR1 or CD335, is an Ig-like superfamily cell surface receptor that is highly conserved in mammals (PMID: 22021440). NKp46 is a type I transmembrane glycoprotein consisting of two extracellular Ig-like domains, a transmembrane domain, and an intracellular tail (PMID: 9730896). It is expressed on NK cells, rare T-cell subsets and a mucosal population of NKp46+ innate lymphoid cells (PMID: 9730896; 22021440). NKp46 is the major triggering receptor involved in the natural cytotoxicity (PMID: 10359120; 10092106; 15356098).

## Storage

**Storage:**  
Store at -80°C.  
**Storage Buffer:**  
PBS Only

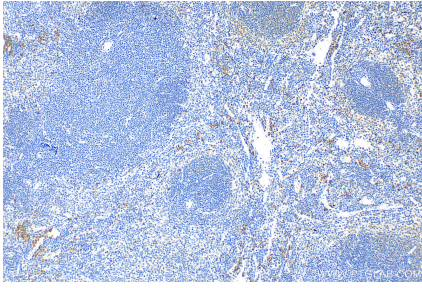
For technical support and original validation data for this product please contact:

T: 1 (888) 4PTGLAB (1-888-478-4522) (toll free  
in USA), or 1(312) 455-8498 (outside USA)

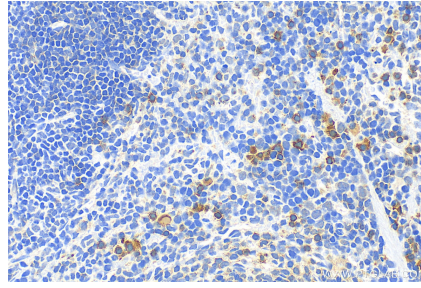
E: [proteintech@ptglab.com](mailto:proteintech@ptglab.com)  
W: [ptglab.com](http://ptglab.com)

**This product is exclusively available under Proteintech Group brand and is not available to purchase from any other manufacturer.**

## Selected Validation Data



Immunohistochemical analysis of paraffin-embedded mouse spleen tissue slide using 31984-1-AP (Nkp46/NCR1 antibody) at dilution of 1:400 (under 10x lens). Heat mediated antigen retrieval with Tris-EDTA buffer (pH 9.0). This data was developed using the same antibody clone with 31984-1-PBS in a different storage buffer formulation.



Immunohistochemical analysis of paraffin-embedded mouse spleen tissue slide using 31984-1-AP (Nkp46/NCR1 antibody) at dilution of 1:400 (under 40x lens). Heat mediated antigen retrieval with Tris-EDTA buffer (pH 9.0). This data was developed using the same antibody clone with 31984-1-PBS in a different storage buffer formulation.