

For Research Use Only

CTAGE5 Polyclonal antibody

Catalog Number: 31986-1-AP



Basic Information

Catalog Number: 31986-1-AP	GenBank Accession Number: BC130537	Purification Method: Antigen affinity Purification
Size: 150ul , Concentration: 450 ug/ml by Nanodrop;	GeneID (NCBI): 4253	Recommended Dilutions: WB: 1:1000-1:5000
Source: Rabbit	UNIPROT ID: Q96PC5	
Isotype: IgG	Full Name: CTAGE family, member 5	
Immunogen Catalog Number: AG34060	Calculated MW: 160 kDa	
	Observed MW: 240 kDa	

Applications

Tested Applications: WB, ELISA	Positive Controls: WB : HepG2 cells, HuH-7 cells
Species Specificity: human	

Background Information

Cutaneous T-cell lymphoma-associated antigen 5 (CTAGE5, also known as MIA2) is a protein involved in the regulation of intracellular transport and secretion. It plays a crucial role in the trafficking of large cargo proteins, such as collagen VII, from the endoplasmic reticulum (ER) to the Golgi apparatus (PMID: 25202031; 27170179). CTAGE5 forms a complex with TANGO1, another cargo receptor, to facilitate the export of collagen VII from the ER (PMID: 21525241). This process is essential for the proper secretion of collagen and other large proteins, which are critical for maintaining tissue integrity and function. Additionally, CTAGE5 produces 240 and 120 kDa protein isoforms (PMID: 21807889).

Storage

Storage:
Store at -20°C. Stable for one year after shipment.
Storage Buffer:
PBS with 0.02% sodium azide and 50% glycerol, pH7.3
Aliquoting is unnecessary for -20°C storage

*** 20ul sizes contain 0.1% BSA

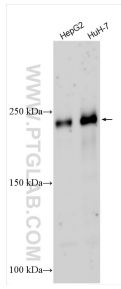
For technical support and original validation data for this product please contact:

T: 1 (888) 4PTGLAB (1-888-478-4522) (toll free in USA), or 1(312) 455-8498 (outside USA)

E: proteintech@ptglab.com
W: ptglab.com

This product is exclusively available under Proteintech Group brand and is not available to purchase from any other manufacturer.

Selected Validation Data



Various lysates were subjected to SDS PAGE followed by western blot with 31986-1-AP (CTAGE5 antibody) at dilution of 1:2500 incubated at room temperature for 1.5 hours.